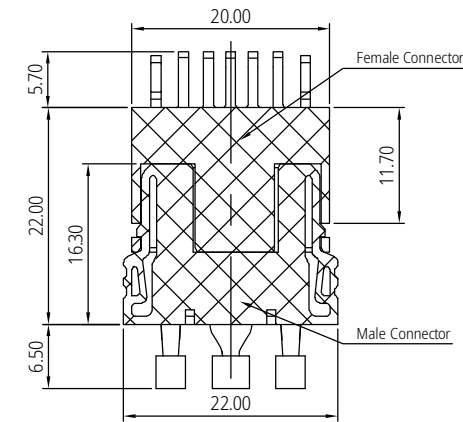
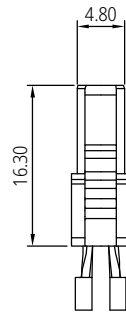


Power cable recommended 14AWG



Signal cable recommended 18AWG



Mating View

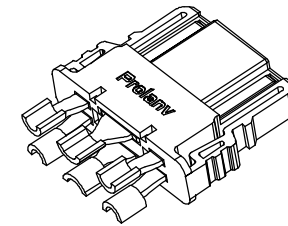
Part Number: PDC0710B0001

Contact Plating Spec. Code:

B: Au 5 μ " plating on Contact area, matte Tin 80 μ " min. on Tails and 50 μ " min. Nickel overall.

C: Au 15 μ " plating on Contact area, matte Tin 80 μ " min. on Tails and 50 μ " min. Nickel overall.

F: Au 30 μ " plating on Contact area, matte Tin 80 μ " min. on Tails and 50 μ " min. Nickel overall.

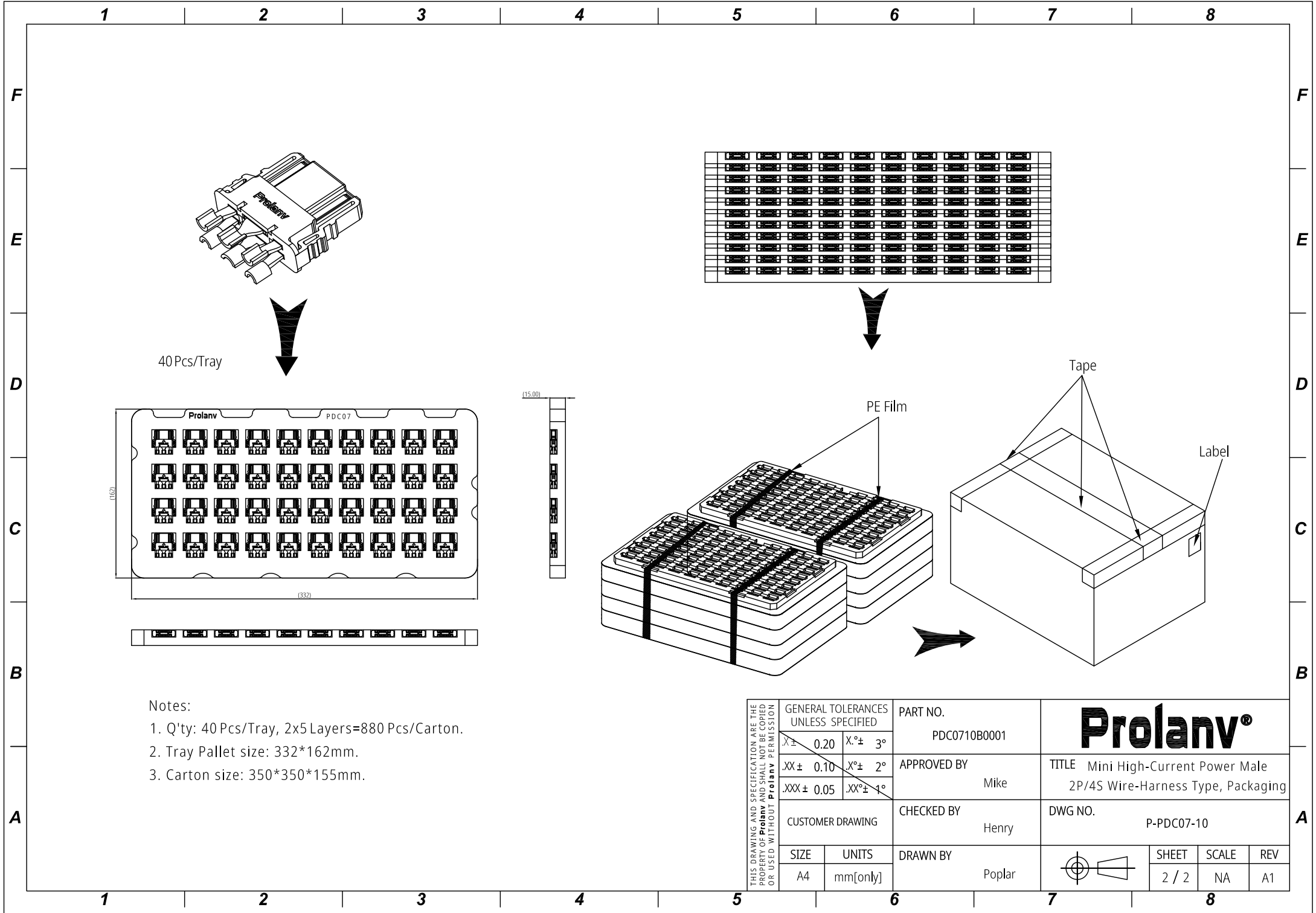


3D View

Notes:

1. Material Specification
 - 1-1.Housing: High Temperature Thermoplastic. UL94 V-2, Black.
 - 1-2.Contact: High Conductivity Copper Alloy.
2. Plating Specification:
 - 2-1.Contact: Gold plating on Contact area, matte Tin on Tails, Nickel overall.
3. Electrical performance
 - 3-1.Voltage Rating: 100v DC/ Power Blade, 60V AC/DC /Signal Pin.
 - 3-2.Current Rating: 35A Max./Per Power Blade, 1A Max/Per Signal Pin.
 - 3-3.LLCR: initial 1.0m Ω max., finished 2.0m Ω max.(per Power Blade); initial 10m Ω max., finished 20m Ω max.(per Signal Pin).
 - 3-4.Dielectric Withstanding Voltage: 1500v DC rms/Power Blade; 500v DC rms/Signal Pin.
 - 3-5.Insulation Resistance: 5000 M Ω min/power blade;
4. Mechanical Performance:
 - 4-1.Insertion force: 49N (5.0 kgf) max.
 - 4-2.Withdrawal force: 4.9N~39.2N (0.5~4.0 kgf).
 - 4-3.Durability life: 1000 cycles min.
5. Operating Temperature Range: -40~125 $^{\circ}$ c(without loss function).
6. All parts RoHS and Reach compliant.

THIS DRAWING AND SPECIFICATION ARE THE PROPERTY OF Prolanv AND SHALL NOT BE COPIED OR USED WITHOUT Prolanv PERMISSION	GENERAL TOLERANCES UNLESS SPECIFIED		PART NO. PDC0710B0001	Prolanv [®]		
	X \pm 0.20	X $^{\circ}$ \pm 3 $^{\circ}$				
	.XX \pm 0.10	.X $^{\circ}$ \pm 2 $^{\circ}$	CHECKED BY Henry	DWG NO. PDC07-10		
	.XXX \pm 0.05	.XX $^{\circ}$ \pm 1 $^{\circ}$	DRAWN BY Poplar	SHEET 1 / 2		
SIZE A4	UNITS mm[only]				SCALE 1:1	REV A1



40 Pcs/Tray

- Notes:
1. Q'ty: 40 Pcs/Tray, 2x5 Layers=880 Pcs/Carton.
 2. Tray Pallet size: 332*162mm.
 3. Carton size: 350*350*155mm.

THIS DRAWING AND SPECIFICATION ARE THE PROPERTY OF Prolanv AND SHALL NOT BE COPIED OR USED WITHOUT Prolanv PERMISSION	GENERAL TOLERANCES UNLESS SPECIFIED		PART NO.	<h1 style="margin: 0;">Prolanv®</h1>							
	$.X \pm 0.20$	$X^\circ \pm 3^\circ$	PDC0710B0001								
	$.XX \pm 0.10$	$X^\circ \pm 2^\circ$	APPROVED BY	TITLE Mini High-Current Power Male 2P/4S Wire-Harness Type, Packaging							
	$.XXX \pm 0.05$	$.XX^\circ \pm 1^\circ$	Mike								
	CUSTOMER DRAWING		CHECKED BY	DWG NO. P-PDC07-10							
		Henry									
SIZE	UNITS	DRAWN BY	<table border="1" style="display: inline-table; margin-left: 20px;"> <tr> <td>SHEET</td> <td>SCALE</td> <td>REV</td> </tr> <tr> <td>2 / 2</td> <td>NA</td> <td>A1</td> </tr> </table>			SHEET	SCALE	REV	2 / 2	NA	A1
SHEET	SCALE	REV									
2 / 2	NA	A1									
A4	mm[only]	Poplar									