

Part Number: PDP1010X0001

Contact Plating Spec. Code:

A: Gold Flash on Contact area, matte Tin 60µ" min. on Tails and 50µ" min. Nickel overall.
 B: Au 5µ" on Contact area, matte Tin 60µ" min. on Tails and 50µ" min. Nickel overall.
 C: Au 15µ" on Contact area, matte Tin 60µ" min. on Tails and 50µ" min. Nickel overall.
 5: Au 30µ" on Contact area, matte Tin 60µ" min. on Tails and 50µ" min. Nickel overall.

Leg Height Code:

1: DIM A=1.40mm, DIM B=2.05mm
 2: DIM A=1.80mm, DIM B=2.45mm

- Notes:
- Material Specification:
 - Housing: LCP+30% G.F UL94 V-0.
 - Contact: Copper Alloy C2680 T=0.20mm.
 - Shell: Stainless Steel (SUS304) T=0.40mm.
 - Plating Specification:
 - Contact: see P/N.
 - Shell: Nickel Plated.
 - Mechanical Performance:
 - Insertion force: 44.1N (4.5kgf) max.
 - Withdrawal force: 9.8N~25N (1.0~2.5kgf).
 - Durability: 10,000 cycles.
 - Electrical Performance:
 - Current Rating: 0.5A.
 - LLCR: Contact: 30 mΩ max.(initial), Shell: 50 mΩ max.(initial).
 - Insulation Resistance:
 - Unmated:100 MΩ min. at 500V DC, Mated:10 MΩ min. at 150V DC.
 - Dielectric withstand voltage:
 - 150V AC/60s (mated), 250V AC/60s(unmated).
 - IR Reflow:
 - The peak temperature on board shall be maintained for 10 seconds at 260±5°C.
 - Operating temperature range: -35°C~105°C(without loss function).
 - RoHS and Reach compliant.

Pin Assignment	
Pin Number	Signal Type
1	Out
2	GND
3	Out
4	Out
5	GND
6	Out
7	Out
8	GND
9	Out
10	Out
11	GND
12	Out
13	CONFIG
14	CONFIG
15	I/O
16	GND
17	I/O
18	In
19	RTN
20	PWR Out

THIS DRAWING AND SPECIFICATION ARE THE PROPERTY OF Prolanv AND SHALL NOT BE COPIED OR USED WITHOUT PERMISSION	GENERAL TOLERANCES UNLESS SPECIFIED		PART NO.
	.X± 0.30	X.°± 3°	PDP1010X0001
	.XX± 0.20	X.°± 2°	APPROVED BY
	.XXX± 0.10	.XX°± 1°	KYSIN
CUSTOMER DRAWING		CHECKED BY	DWG NO.
		HARRY	PDP10-10
SIZE	UNITS	DRAWN BY	
A4	mm[only]	LUCIE	

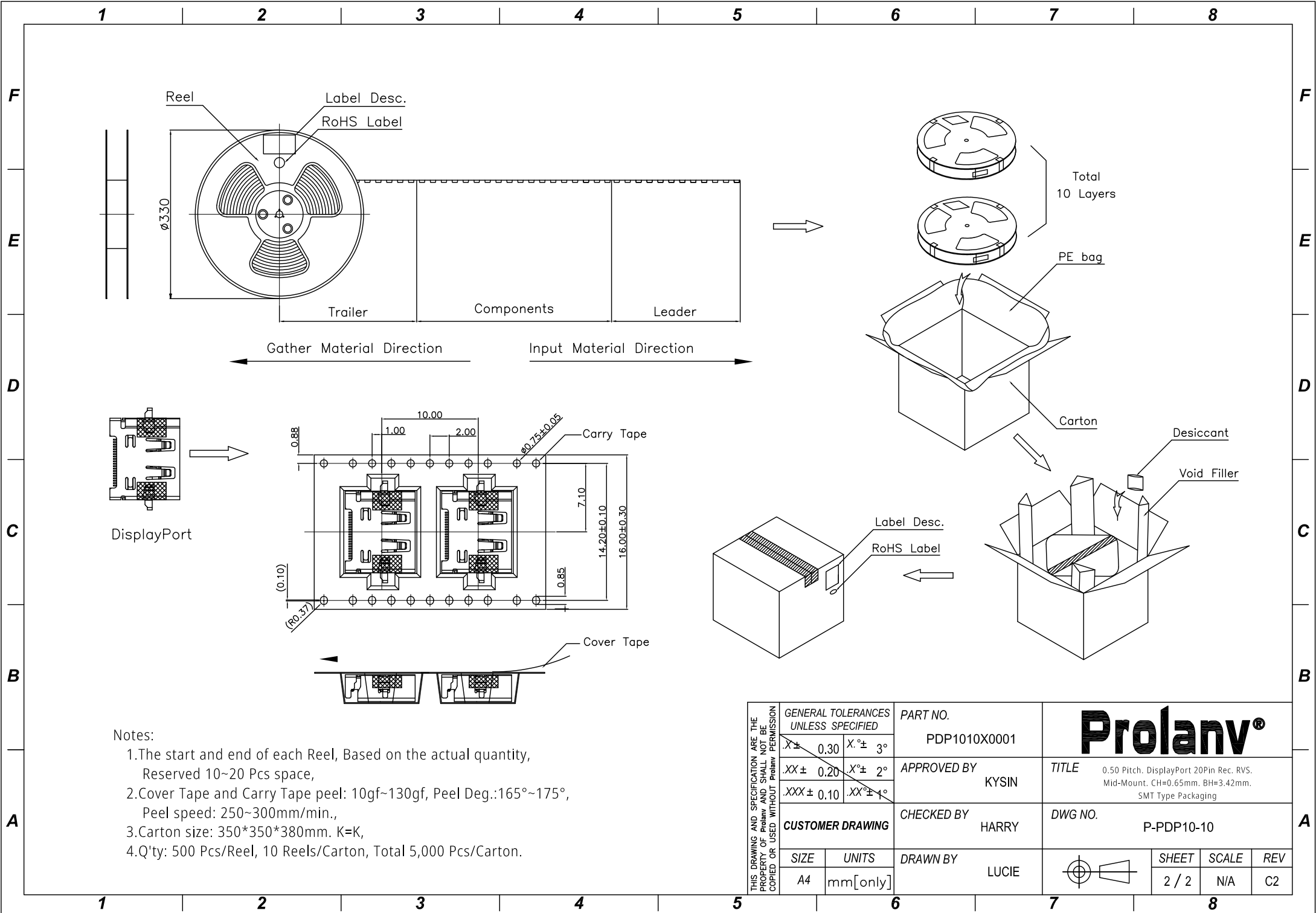
Prolanv®

TITLE 0.50 Pitch.DisplayPort 20Pin Rec.
 RVS. Mid-Mount. CH=0.65mm
 Board-Height=3.42mm. SMT Type

DWG NO. PDP10-10

SHEET	SCALE	REV
1 / 2	1:1	C2

Recommended P.C.B Layout (Top View)
 (Thickness=1.56±0.05mm)
 (Tolerance=±0.03mm)



THIS DRAWING AND SPECIFICATION ARE THE PROPERTY OF Prolanv AND SHALL NOT BE COPIED OR USED WITHOUT Prolanv PERMISSION	GENERAL TOLERANCES UNLESS SPECIFIED		PART NO.		Prolanv®		
	$X \pm 0.30$	$X^\circ \pm 3^\circ$	PDP1010X0001				
	$.XX \pm 0.20$	$X^\circ \pm 2^\circ$	APPROVED BY		TITLE 0.50 Pitch, DisplayPort 20Pin Rec. RVS, Mid-Mount, CH=0.65mm, BH=3.42mm, SMT Type Packaging		
	$.XXX \pm 0.10$	$.XX^\circ \pm 1^\circ$	KYSIN				
CUSTOMER DRAWING		CHECKED BY		DWG NO.			
		HARRY		P-PDP10-10			
SIZE	UNITS	DRAWN BY			SHEET	SCALE	REV
A4	mm[only]	LUCIE			2 / 2	N/A	C2