

- Notes:
- Material Specification:
 - Housing: LCP+30% G.F UL94 V-0. Black.
 - Contact: Copper Alloy C2680 T=0.20mm.
 - Shell: Stainless Steel (SUS304) T=0.50mm.
 - Plating Specification:
 - Contact: see P/N.
 - Shell: Nickel Plated.
 - Mechanical Performance:
 - Insertion force: 44.1N (4.5kgf) max.
 - Withdrawal force: 4.9N~39.2N (0.5~4.0kgf).
 - Durability: 10,000 cycles.
 - Electrical Performance:
 - Current Rating: 0.5A.
 - LLCR: Contact: 30 mΩ max.(initial), Shell: 50 mΩ max.(initial).
 - Insulation Resistance:
 - Unmated:100 MΩ min. at 500V DC, Mated:10 MΩ min. at 150V DC.
 - Dielectric withstand voltage:
 - 300V AC/60s (mated), 500V AC/60s(unmated).
 - IR Reflow:
 - The peak temperature on board shall be maintained for 10 seconds at 260±5°C.
 - Operating temperature range: -35°C~105°C(without loss function).
 - All parts RoHS and Reach compliant.

Part Number: PHD0510X0009

Contact Plating Spec. Code:
 A: Gold Flash on Contact area, matte Tin 60μ" min. on Tails, and 50μ" min. Nickel overall.
 B: Au 5μ" on Contact area, matte Tin 80μ" min. on Tails and 50μ" min. Nickel overall.
 C: Au 15μ" on Contact area, matte Tin 80μ" min. on Tails, and 50μ" min. Nickel overall.
 1: Gold Flash on Contact area, and on Tails. and 50μ" min.Nickel overall.

PIN	SIGNAL ASSIGNMENT	PIN	SIGNAL ASSIGNMENT
1	TMDS Data2+	11	TMDS Clock Shield
2	TMDS Data2 Shield	12	TMDS Clock-
3	TMDS Data2-	13	CEC
4	TMDS Data+	14	Reserved (N.C. on device)
5	TMDS Data1 Shield	15	SCL
6	TMDS Data1-	16	SDA
7	TMDS Data0+	17	DDC/CEC Ground
8	TMDS Data0 Shield	18	+5V Power
9	TMDS Data0-	19	Hot Plug Detect
10	TMDS Clock+		

THIS DRAWING AND SPECIFICATION ARE THE PROPERTY OF Prolanv AND SHALL NOT BE COPIED OR USED WITHOUT PERMISSION OF Prolanv.

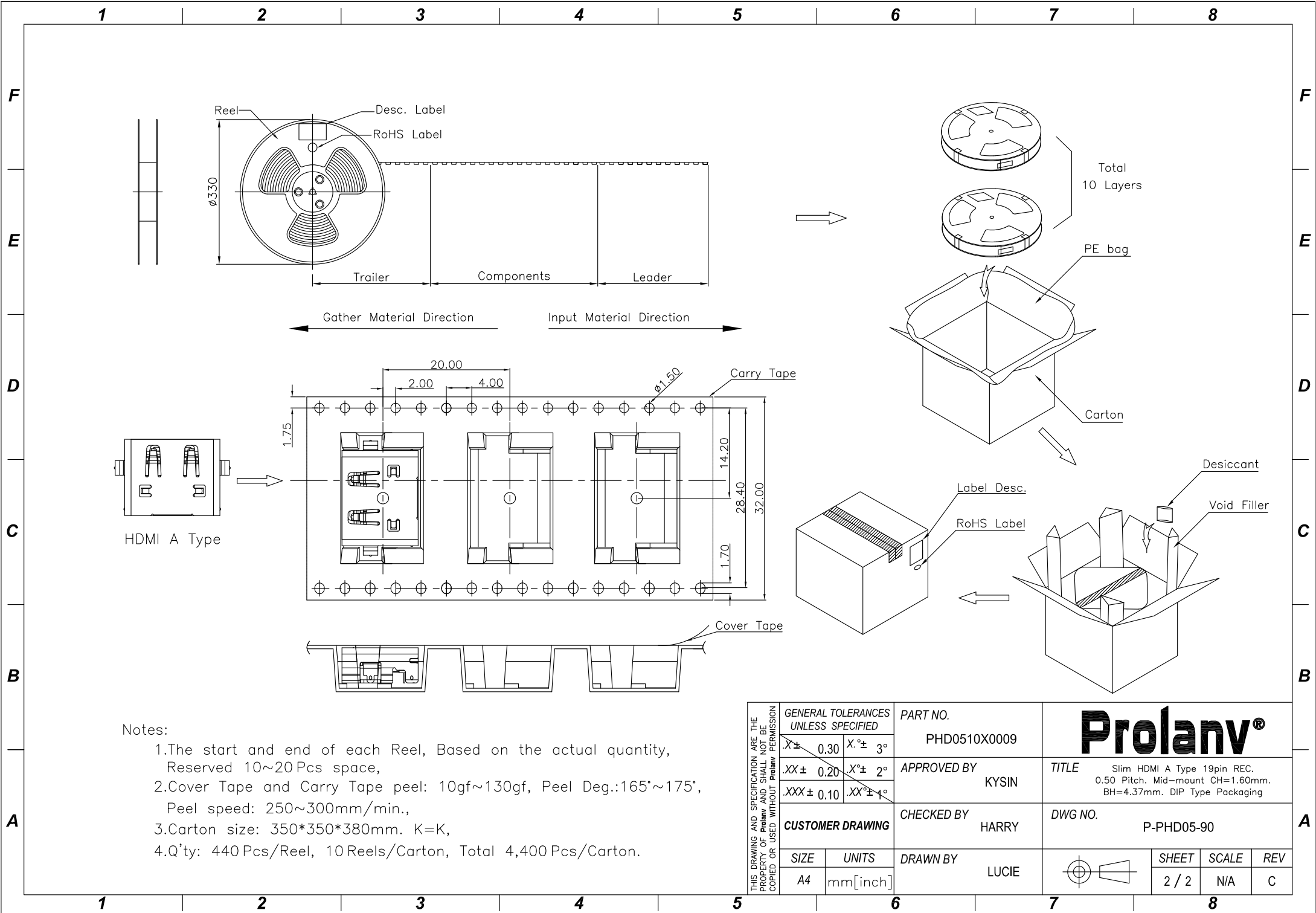
GENERAL TOLERANCES UNLESS SPECIFIED		PART NO.	
.X± 0.30	X.°± 3°	PHD0510X0009	
.XX± 0.20	X.°± 2°	APPROVED BY	
.XXX± 0.10	.XX°± 1°	KYSIN	
CUSTOMER DRAWING		CHECKED BY	
		HARRY	
SIZE		DRAWN BY	
A4	UNITS	LUCIE	
	mm[inch]		

DWG NO.	
PHD05-90	
SHEET	
1 / 2	
SCALE	
1:1	
REV	
C	

Prolanv®

TITLE Slim HDMI A Type 19pin REC. 0.50 Pitch. Mid-mount CH=1.60mm. Board-Height=4.37mm. DIP Type

DWG NO. PHD05-90



- Notes:
- 1.The start and end of each Reel, Based on the actual quantity, Reserved 10~20Pcs space,
 - 2.Cover Tape and Carry Tape peel: 10gf~130gf, Peel Deg.:165°~175°, Peel speed: 250~300mm/min.,
 - 3.Carton size: 350*350*380mm. K=K,
 - 4.Q'ty: 440 Pcs/Reel, 10 Reels/Carton, Total 4,400 Pcs/Carton.

THIS DRAWING AND SPECIFICATION ARE THE PROPERTY OF Prolanv AND SHALL NOT BE COPIED OR USED WITHOUT PERMISSION	GENERAL TOLERANCES UNLESS SPECIFIED		PART NO.		Prolanv®						
	X ± 0.30	X° ± 3°	PHD0510X0009								
	.XX ± 0.20	X° ± 2°	APPROVED BY		TITLE						
	.XXX ± 0.10	.XX° ± 1°	KYSIN		Slim HDMI A Type 19pin REC. 0.50 Pitch. Mid-mount CH=1.60mm. BH=4.37mm. DIP Type Packaging						
CUSTOMER DRAWING		CHECKED BY		DWG NO.							
		HARRY		P-PHD05-90							
SIZE	UNITS	DRAWN BY		<table border="1" style="display: inline-table; vertical-align: middle;"> <tr> <td>SHEET</td> <td>SCALE</td> <td>REV</td> </tr> <tr> <td>2 / 2</td> <td>N/A</td> <td>C</td> </tr> </table>		SHEET	SCALE	REV	2 / 2	N/A	C
SHEET	SCALE	REV									
2 / 2	N/A	C									
A4	mm[inch]	LUCIE									