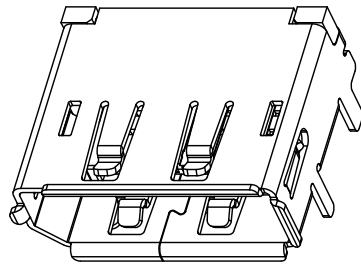
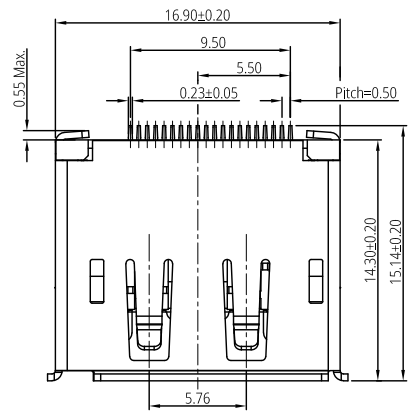


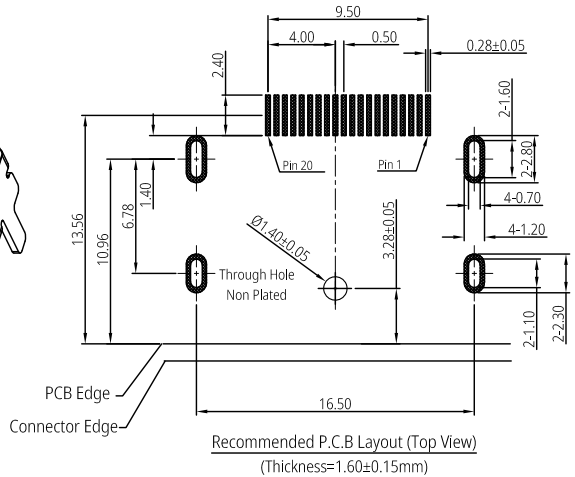
1 2 3 4 5 6 7 8

F
E
D
C
B
A

F
E
D
C
B
A



3D View



Recommended P.C.B Layout (Top View)
(Thickness=1.60±0.15mm)

Notes:

1. Material Specification:
 - 1-1. Housing: LCP+30% G.F UL94 V-0.
 - 1-2. Contact: Copper Alloy C2680 T=0.20mm.
 - 1-3. Shell: Stainless Steel (SUS304) T=0.40mm.
2. Plating Specification:
 - 2-1. Contact: see P/N.
 - 2-2. Shell: Nickel Plated.
3. Mechanical Performance:
 - 3-1. Insertion force: 44.1N (4.5kgf) max.
 - 3-2. Withdrawal force: 4.9N~25N (0.5~2.5kgf).
 - 3-3. Durability: 10,000 cycles.
4. Electrical Performance:
 - 4-1. Current Rating: 0.5A.
 - 4-2. LLCR: Contact: 30 mΩ max.(initial), Shell: 50 mΩ max.(initial).
 - 4-3. Insulation Resistance:
 - Unmated:100 MΩ min. at 500V DC, Mated:10 MΩ min. at 150V DC.
 - 4-4. Dielectric withstand voltage:
 - 150V AC/60s (mated), 250V AC/60s(unmated).
5. IR Reflow:
 - The peak temperature on board shall be maintained for 10 seconds at 260±5°C.
6. Operating temperature range: -35°C~105°C(without loss function).
7. RoHS and Reach compliant.

Part Number: PDP0121X0108

Contact Plating Spec. Code: _____ Mylar Code: _____

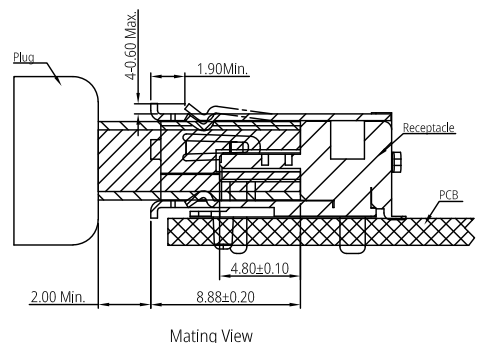
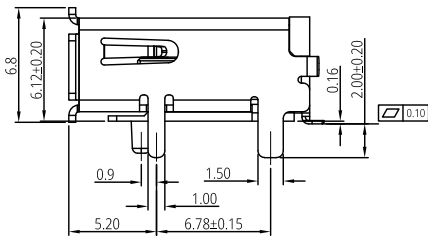
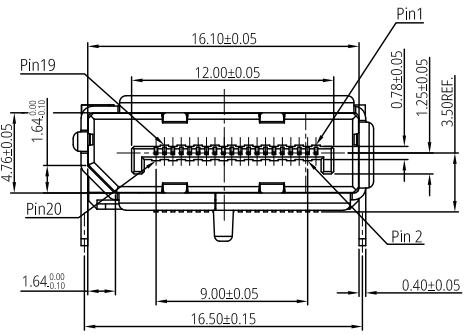
A: Gold Flash on Contact area, matte Tin 60μ" min. on Tails and 50μ" min. Nickel overall. 0: W/O Mylar. 1: W/Mylar.

B: Au 3μ" on Contact area, matte Tin 60μ" min. on Tails and 50μ" min. Nickel overall.

C: Au 15μ" on Contact area, matte Tin 60μ" min. on Tails and 50μ" min. Nickel overall.

Post Code: _____

0: W/O Post. 1: W/Post.



Mating View

Pin Assignment	
Pin Number	Signal Type
1	Out
2	GND
3	Out
4	Out
5	GND
6	Out
7	Out
8	GND
9	Out
10	Out
11	GND
12	Out
13	CONFIG
14	CONFIG
15	I/O
16	GND
17	I/O
18	In
19	RTN
20	PWR Out

THIS DRAWING AND SPECIFICATION ARE THE PROPERTY OF Prolanv AND SHALL NOT BE COPIED OR USED WITHOUT Prolanv PERMISSION	GENERAL TOLERANCES UNLESS SPECIFIED		PART NO. PDP0121X0108
	X ± 0.30	X° ± 3°	
	XX ± 0.20	X° ± 2°	APPROVED BY Kysin
	XXX ± 0.05	XX° ± 1°	CHECKED BY Harry
	CUSTOMER DRAWING		DRAWN BY Lucie

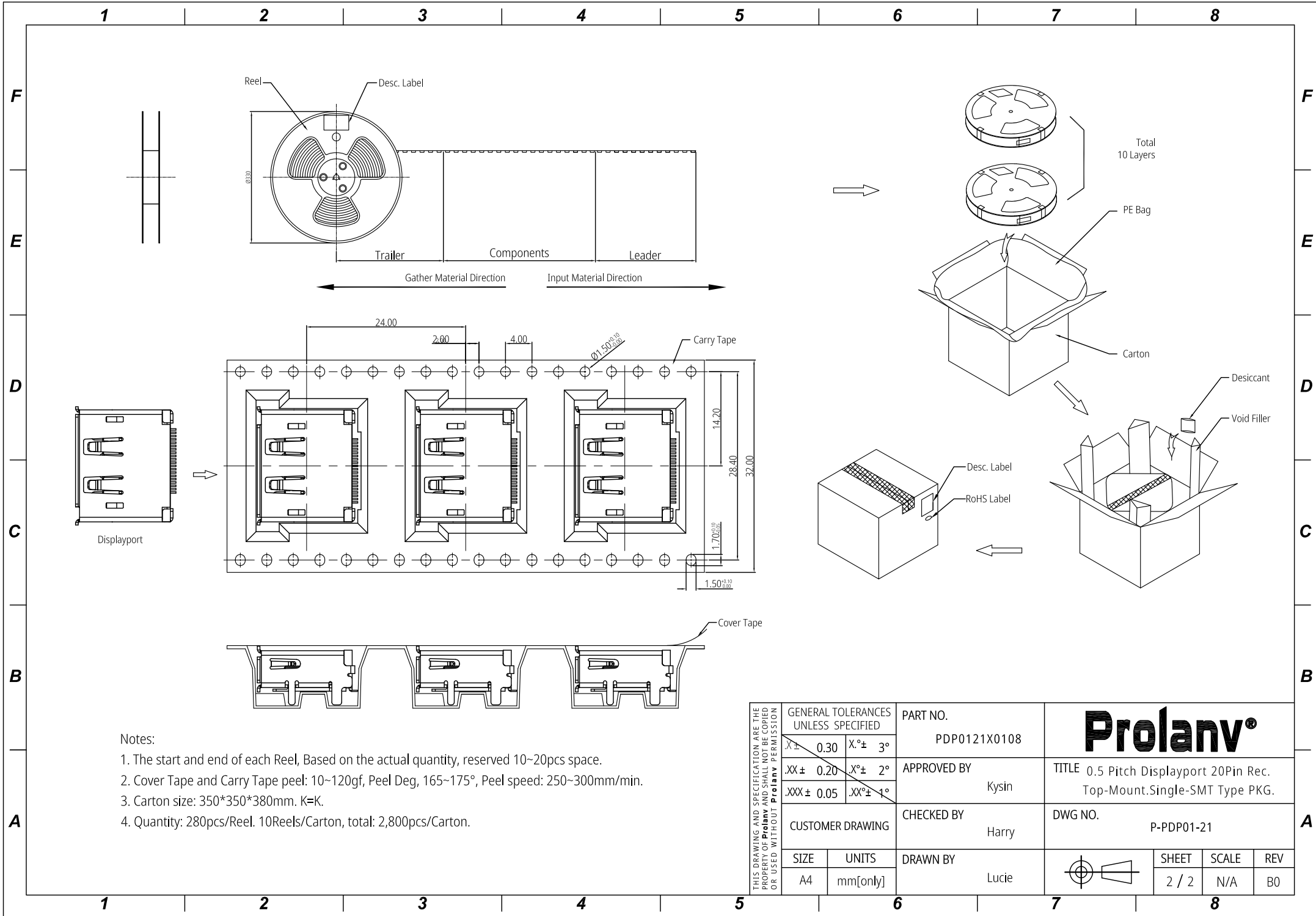
Prolanv®

TITLE 0.5 Pitch Displayport 20Pin Rec. Top-Mount.Single-SMT Type

DWG NO. PDP01-21

	SHEET	SCALE	REV
	1 / 2	1:1	B0

1 2 3 4 5 6 7 8



Notes:

1. The start and end of each Reel, Based on the actual quantity, reserved 10~20pcs space.
2. Cover Tape and Carry Tape peel: 10~120gf, Peel Deg, 165~175°, Peel speed: 250~300mm/min.
3. Carton size: 350*350*380mm. K=K.
4. Quantity: 280pcs/Reel. 10Reels/Carton, total: 2,800pcs/Carton.

THIS DRAWING AND SPECIFICATION ARE THE PROPERTY OF Prolanv AND SHALL NOT BE COPIED OR USED WITHOUT Prolanv PERMISSION	GENERAL TOLERANCES UNLESS SPECIFIED		PART NO.		Prolanv®	
	$X \pm 0.30$	$X^\circ \pm 3^\circ$	PDP0121X0108			
	$.XX \pm 0.20$	$.X^\circ \pm 2^\circ$	APPROVED BY		TITLE 0.5 Pitch Displayport 20Pin Rec. Top-Mount.Single-SMT Type PKG.	
	$.XXX \pm 0.05$	$.XX^\circ \pm 1^\circ$	Kysin			
	CUSTOMER DRAWING		CHECKED BY		DWG NO. P-PDP01-21	
SIZE		DRAWN BY				
A4	mm[only]	Lucie				
				SHEET	SCALE	REV
				2 / 2	N/A	B0