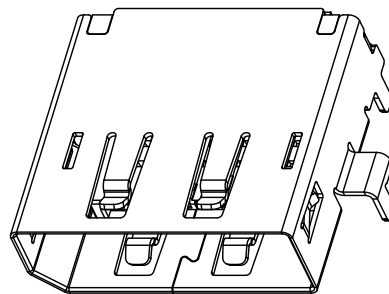
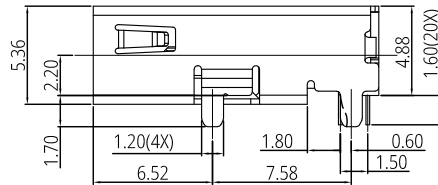
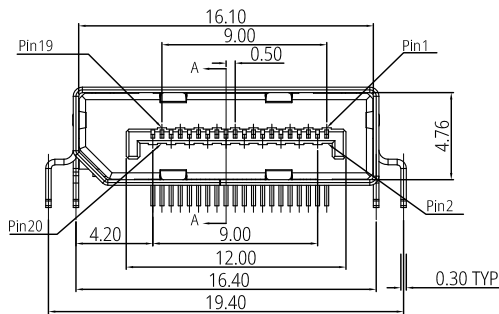
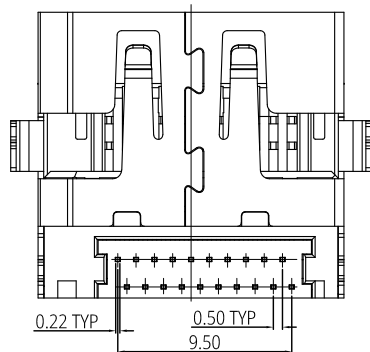


Recommended P.C.B Layout (Top View)
(Thickness=1.20±0.05mm)



3D View



Notes:

1. Material Specification:
 - 1-1. Housing: LCP+30% G.F UL94 V-0.
 - 1-2. Contact: Copper Alloy C2680 T=0.20mm.
 - 1-3. Shell: Stainless Steel (SUS304) T=0.40mm.
2. Plating Specification:
 - 2-1. Contact: see P/N.
 - 2-2. Shell: Nickel Plated.
3. Mechanical Performance:
 - 3-1. Insertion force: 44.1N (4.5kgf) max.
 - 3-2. Withdrawal force: 9.8N~25N (1.0~2.5kgf).
 - 3-3. Durability: 10,000 cycles.
4. Electrical Performance:
 - 4-1. Current Rating: 0.5A.
 - 4-2. LLCR: Contact: 30 mΩ max.(initial), Shell: 50 mΩ max.(initial).
 - 4-3. Insulation Resistance:
 - Unmated: 100 MΩ min. at 500V DC, Mated: 10 MΩ min. at 150V DC.
 - 4-4. Dielectric withstand voltage:
 - 150V AC/60s (mated), 250V AC/60s (unmated).
5. IR Reflow:
 - The peak temperature on board shall be maintained for 10 seconds at 260±5°C.
6. Operating temperature range: -35°C~105°C (without loss function).
7. RoHS and Reach compliant.

Part Number: PDP0910X0001

Contact Plating Spec. Code:

- A: Gold Flash on Contact area, matte Tin 60μ" min. on Tails, and 50μ" min. Nickel overall.
- B: Au 5μ" on Contact area, matte Tin 60μ" min. on Tails and 50μ" min. Nickel overall.
- C: Au 15μ" on Contact area, matte Tin 60μ" min. on Tails and 50μ" min. Nickel overall.
- 5: Au 30μ" on Contact area, Gold Flash on Tails and 50μ" min. Nickel overall.

DisplayPort Connector Pin Assignment

Pin Number	Signal Assignment	Pin Number	Signal Assignment
1	Out	2	GND
3	Out	4	Out
5	GND	6	Out
7	Out	8	GND
9	Out	10	Out
11	GND	12	Out
13	Config	14	Config
15	I/O	16	GND
17	I/O	18	In
19	RTN	20	PWR Out

THIS DRAWING AND SPECIFICATION ARE THE PROPERTY OF Prolanv AND SHALL NOT BE COPIED OR USED WITHOUT Prolanv PERMISSION

GENERAL TOLERANCES UNLESS SPECIFIED		PART NO.	
X ± 0.30	X° ± 3°	PDP0910X0001	
XX ± 0.20	X° ± 2°	APPROVED BY	
XXX ± 0.05	XX° ± 1°	Kysin	
CUSTOMER DRAWING		CHECKED BY	
		Harry	
SIZE		DRAWN BY	
A4	mm[only]	Lucie	

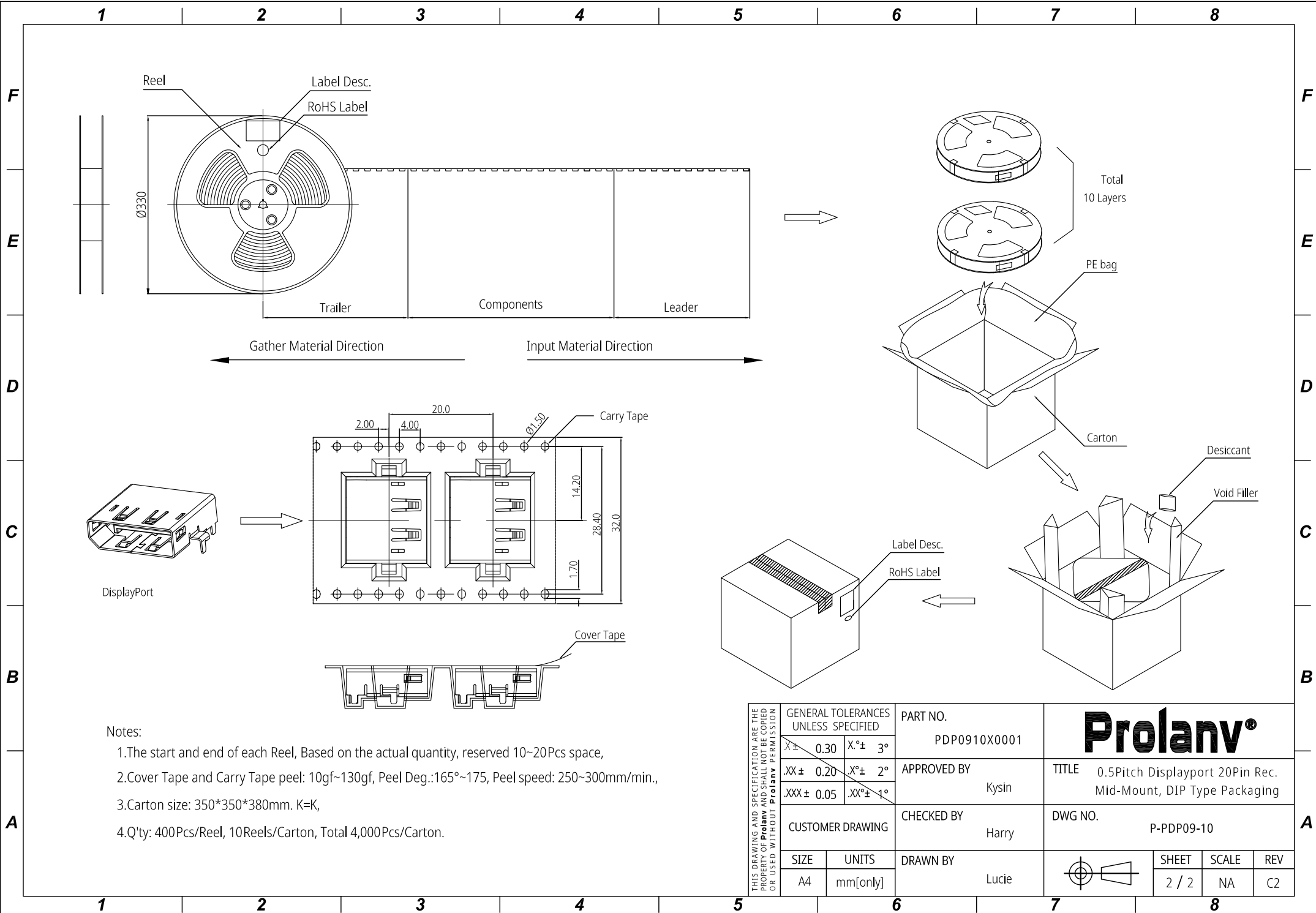
Prolanv®

TITLE 0.5Pitch Displayport 20Pin Rec.
Mid-Mount CH=2.2mm, DIP Type

DWG NO. PDP09-10

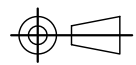


SHEET	SCALE	REV
1 / 2	1:1	C2



Notes:

- 1.The start and end of each Reel, Based on the actual quantity, reserved 10~20Pcs space,
- 2.Cover Tape and Carry Tape peel: 10gf~130gf, Peel Deg.:165°~175, Peel speed: 250~300mm/min.,
- 3.Carton size: 350*350*380mm. K=K,
- 4.Q'ty: 400Pcs/Reel, 10Reels/Carton, Total 4,000Pcs/Carton.

THIS DRAWING AND SPECIFICATION ARE THE PROPERTY OF Prolanv AND SHALL NOT BE COPIED OR USED WITHOUT Prolanv PERMISSION	GENERAL TOLERANCES UNLESS SPECIFIED		PART NO.		Prolanv®					
	$X \pm 0.30$	$X^\circ \pm 3^\circ$	PDP0910X0001							
	$.XX \pm 0.20$	$.X^\circ \pm 2^\circ$	APPROVED BY		TITLE 0.5Pitch Displayport 20Pin Rec. Mid-Mount, DIP Type Packaging					
	$.XXX \pm 0.05$	$.XX^\circ \pm 1^\circ$	Kysin							
	CUSTOMER DRAWING		CHECKED BY		DWG NO. P-PDP09-10					
			Harry							
SIZE	UNITS	DRAWN BY		 <table border="1" style="display: inline-table; vertical-align: middle;"> <tr> <td>SHEET</td> <td>SCALE</td> <td>REV</td> </tr> <tr> <td>2 / 2</td> <td>NA</td> <td>C2</td> </tr> </table>	SHEET	SCALE	REV	2 / 2	NA	C2
SHEET	SCALE	REV								
2 / 2	NA	C2								
A4	mm[only]	Lucie								