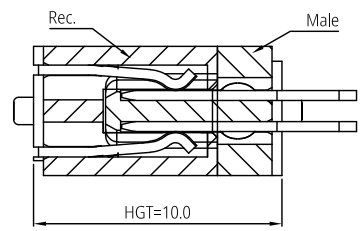
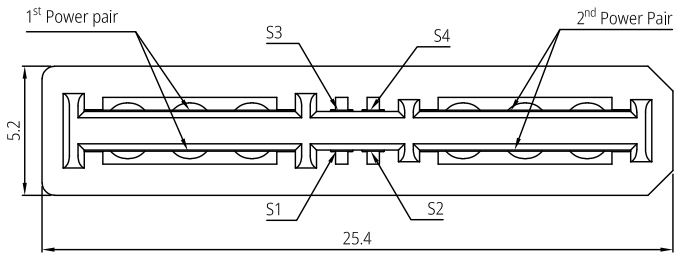


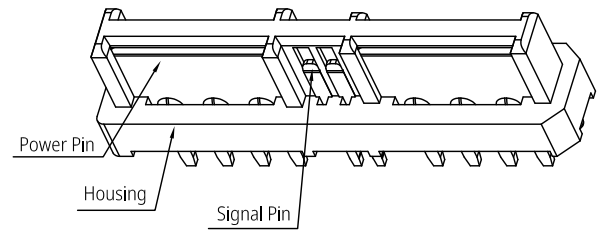
1 2 3 4 5 6 7 8

F

F



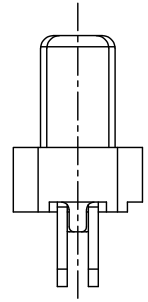
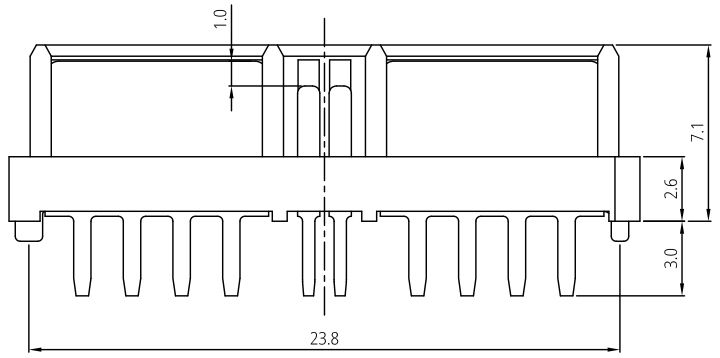
Mating View



3D View

E

E



Note:

1. Material:
 - 1-1. Housing: High temperature thermoplastic, UL94 V-0, black.
 - 1-2. Power Pin: High Conductivity Copper Alloy,
 - 1-3. Signal Pin: Copper Alloy.
2. Plating Specification:
 - Gold Plating on the functional area of contact, Nickel 50µ" min. under plated, Matte Tin on Tails.
3. Electrical Performance:
 - 3-1. Current rating (Power Pin): 50A/Per Pair,
 - 3-2. Current rating (Signal Pin): 1A/Per Pin,
 - 3-3. LLCR (Power Pin): 0.5mΩ max.(initial), 1mΩ max.(final),
 - 3-4. LLCR (Signal Pin): 20mΩ max.(initial), 30mΩ max.(final),
 - 3-5. Dielectric Withstanding Voltage: 500V AC (RMS) for 60s.,
 - 3-6. Insulation Resistance: 500MΩ min. @ 500V DC;
4. IR Reflow:
 - The peak temperature on board shall be maintained for 10 seconds at 260±5°C.
5. Operating temperature range: -35°C-105°C(without loss function).
6. All part RoHS and Reach compliant.

D

D

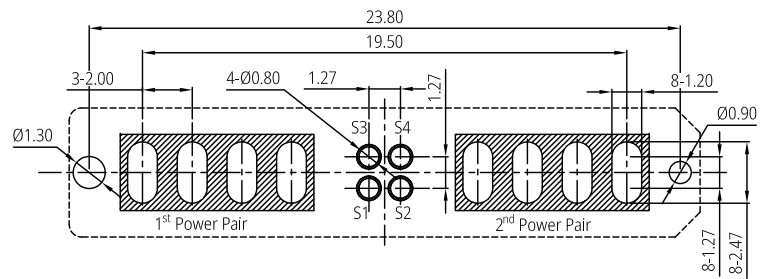
Part Number: PDC4P11X000R

Contact Plating Spec. Code:

- B: Au 3µ" on Contact area, matte Tin 60µ" min. on Tails, and 50µ" min. Nickel overall.
- C: Au 15µ" on Contact area, matte Tin 60µ" min. on Tails and 50µ" min. Nickel overall.

C

C



Recommended P.C.B Layout (Top View)
Tolerance: ±0.05mm

B

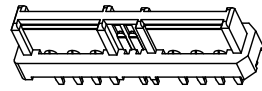
B

| | | | | | | | |
|---|-------------------------------------|-----------|--------------|--|--|--------------|-----------|
| THIS DRAWING AND SPECIFICATION ARE THE PROPERTY OF Prolanv AND SHALL NOT BE COPIED OR USED WITHOUT Prolanv PERMISSION | GENERAL TOLERANCES UNLESS SPECIFIED | | PART NO. | | <h1 style="margin: 0;">Prolanv®</h1> | | |
| | X ± 0.30 | X° ± 3° | PDC4P11B000R | | | | |
| | .XX ± 0.20 | .X° ± 2° | APPROVED BY | | TITLE Mini High-Current Power Female. 2PW+4S, 50A, Vert. DIP Type | | |
| | .XXX ± 0.05 | .XX° ± 1° | Mike | | | | |
| | CUSTOMER DRAWING | | CHECKED BY | | DWG NO. PDC4P-11 | | |
| | | Kysin | | | | | |
| SIZE | UNITS | DRAWN BY | | | SHEET 1 / 2 | SCALE 1:1 | REV A3 |
| A4 | mm[only] | Sunny | | | | | |

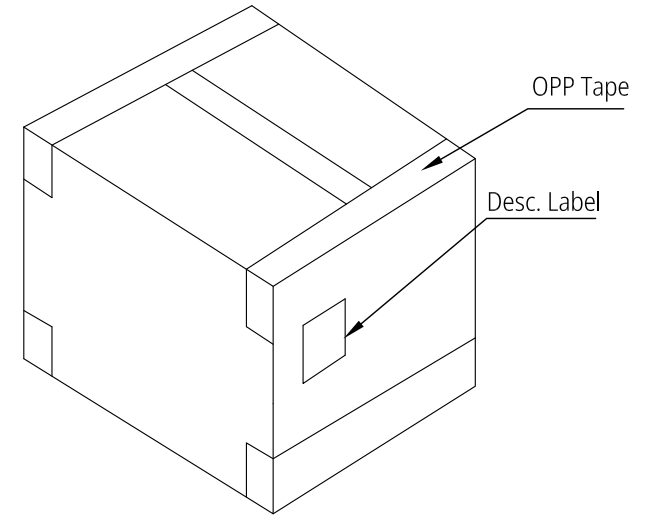
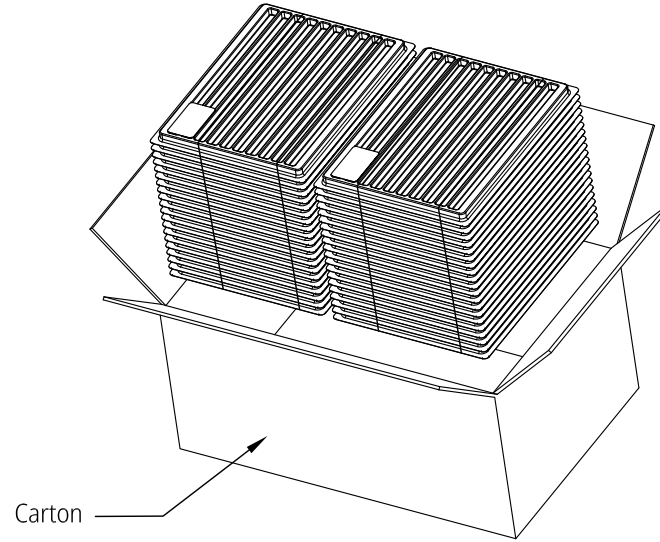
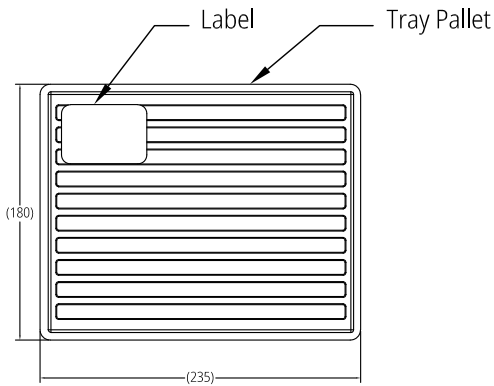
A

A

1 2 3 4 5 6 7 8



PDC4P-11



Notes:

1. Tray Pallet size: 180*235mm,
2. Carton size: 375*250*190mm. K=K,
3. Q'ty: 80 pcs/Tray, 30 Trays*2/Carton, Total 4,800 pcs/Carton.

| | | | | | | |
|---|-------------------------------------|-------------------------|--------------|-------------|---|--------|
| THIS DRAWING AND SPECIFICATION ARE THE PROPERTY OF Prolanv AND SHALL NOT BE COPIED OR USED WITHOUT Prolanv PERMISSION | GENERAL TOLERANCES UNLESS SPECIFIED | | PART NO. | | Prolanv [®] | |
| | $X \pm 0.30$ | $X^\circ \pm 3^\circ$ | PDC4P11B000R | | | |
| | $.XX \pm 0.20$ | $X^\circ \pm 2^\circ$ | APPROVED BY | | TITLE Mini High-Current Power Conn. 2PW+4S, 50A, Vert. Type Packaging | |
| | $.XXX \pm 0.05$ | $.XX^\circ \pm 1^\circ$ | Mike | | DWG NO. P-PDC4P-11 | |
| | CUSTOMER DRAWING | | CHECKED BY | | | |
| SIZE | | DRAWN BY | | | | |
| A4 | UNITS mm[only] | Sunny | | | | |
| | | | | SHEET 2 / 2 | SCALE NA | REV A3 |