

- Notes:
- Material Specification:
 - Housing: LCP+30% G.F UL94 V-0.
 - Contact: Copper Alloy (C5210) T=0.15mm.
 - Leg: Copper Alloy (C2680) T=0.20mm.
 - Plating Specification:
 - Contact: see P/N.
 - Leg: Matte Tin 50µ" min. overall, Nickel 50µ" min. underplating.
 - Mechanical Performance:
 - Insertion force: 20N max.
 - Withdrawal force: 20N max.
 - Durability: 60 cycles min.
 - Vibration:
 - No electrical discontinuity greater than 1u second. shall occur;
 - 3-5.Mechanical shock: 285G half sine/6 axis. no electrical discontinuity greater than 1u second shall occur;
 - Electrical Performance:
 - Current Rating: 0.5A (per pin).
 - Voltage Rating: 50V AC (per pin).
 - LLCR: Contact 55mΩ max.(initial), 20mΩ max. change allowed (final).
 - Insulation Resistance: 5,000MΩ min. at 500V DC.
 - Dielectric withstand voltage: 300V AC/60s.
 - IR Reflow:
 - The peak temperature on board shall be maintained for 10 seconds at 260±5°C.
 - Operating temperature range: -40°C-85°C(without loss function).
 - All parts RoHS and Reach compliant.

Part Number: PHN17101E00X

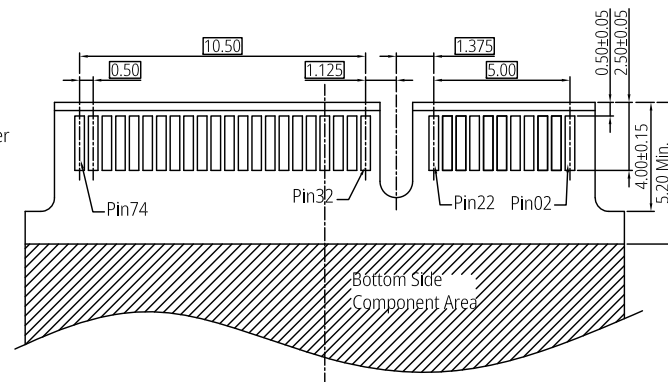
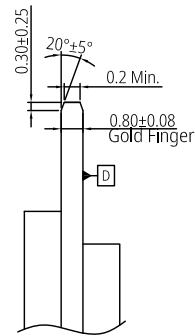
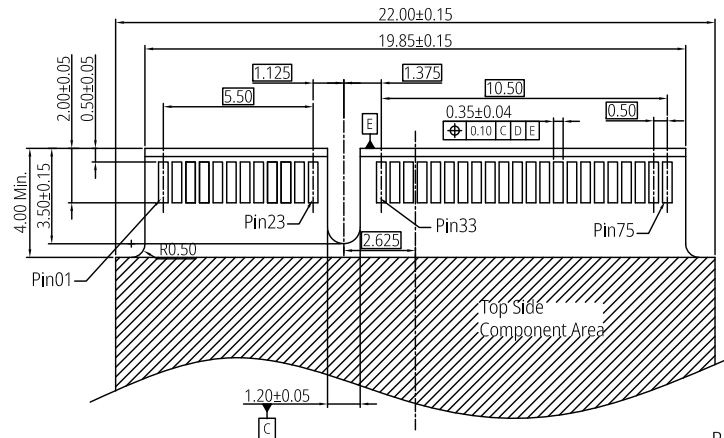
Contact Plating Spec. Code:

7: Gold Flash on Contact area, matte Tin 80µ" min. on Tails and 50µ" min. Nickel overall.

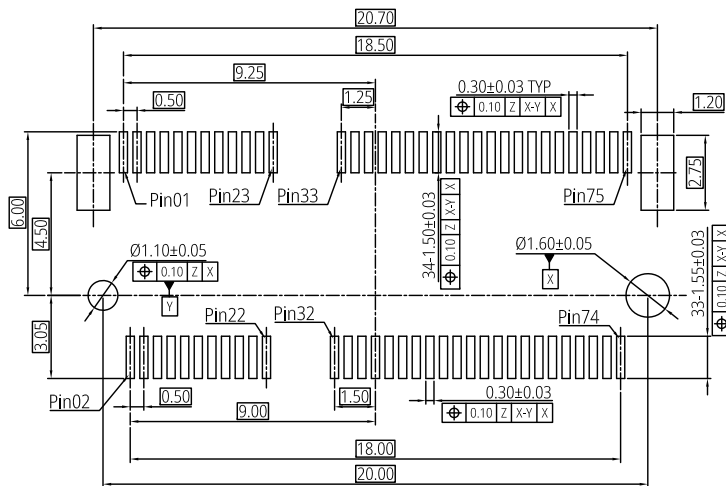
9: Au 5µ" on Contact area, matte Tin 80µ" min. on Tails and 50µ" min. Nickel overall.

A: Au 10µ" on Contact area, matte Tin 80µ" min. on Tails and 50µ" min. Nickel overall.

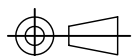
THIS DRAWING AND SPECIFICATION ARE THE PROPERTY OF Prolanv AND SHALL NOT BE COPIED OR USED WITHOUT Prolanv PERMISSION		GENERAL TOLERANCES UNLESS SPECIFIED		PART NO.		Prolanv®		
		.X± 0.30	X.°± 3°	PHN17101E00X				
		.XX± 0.20	X.°± 2°	APPROVED BY		TITLE NGFF Socket (M.2 Connector) 0.50mm Pitch, Top-Mount 6.4H, STD. E-Key. Dual-SMT Type		
		.XXX± 0.10	.XX°± 1°	KYSIN		DWG NO. PHN17-10E		
		CUSTOMER DRAWING		CHECKED BY				
				HARRY				
		SIZE		DRAWN BY				
		A4		LUCIE				
		UNITS				SHEET SCALE REV		
		mm[only]				1 / 3 1:1 B2		

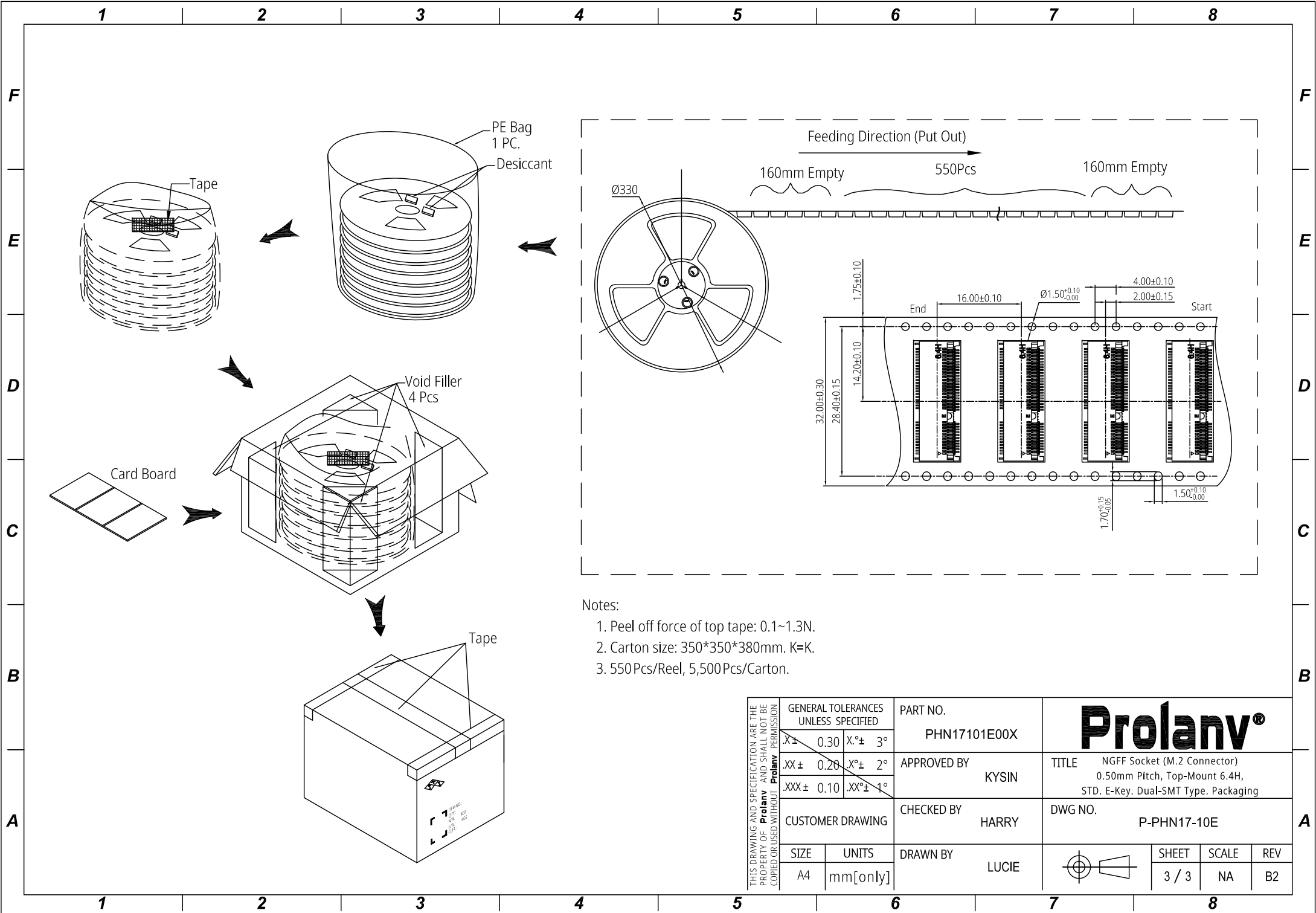


Recommended Mould Finger Layout
Default Tolerance: ±0.05mm



Recommended P.C.B Layout (Top View)
Default Tolerance: ±0.05mm

THIS DRAWING AND SPECIFICATION ARE THE PROPERTY OF Prolanv AND SHALL NOT BE COPIED OR USED WITHOUT Prolanv PERMISSION	GENERAL TOLERANCES UNLESS SPECIFIED		PART NO. PHN17101E00X	Prolanv®						
	.X± 0.30	X.°± 3°			APPROVED BY KYSIN	TITLE NGFF Socket (M.2 Connector) 0.50mm Pitch, Top-Mount 6.4H, STD. E-Key. Dual-SMT Type. Layout				
	.XX± 0.20	X.°± 2°	CHECKED BY HARRY	DWG NO. PHN17-10E						
	.XXX± 0.10	.XX°± 1°			CUSTOMER DRAWING					
SIZE A4	UNITS mm[only]	DRAWN BY LUCIE	 <table border="1"> <tr> <td>SHEET</td> <td>SCALE</td> <td>REV</td> </tr> <tr> <td>2 / 3</td> <td>1:1</td> <td>B2</td> </tr> </table>		SHEET	SCALE	REV	2 / 3	1:1	B2
SHEET	SCALE	REV								
2 / 3	1:1	B2								



Notes:

1. Peel off force of top tape: 0.1~1.3N.
2. Carton size: 350*350*380mm. K=K.
3. 550Pcs/Reel, 5,500Pcs/Carton.

THIS DRAWING AND SPECIFICATION ARE THE PROPERTY OF Prolanv AND SHALL NOT BE COPIED OR USED WITHOUT Prolanv PERMISSION	GENERAL TOLERANCES UNLESS SPECIFIED		PART NO.		<h1 style="margin: 0;">Prolanv®</h1>						
	X ± 0.30	X° ± 3°	PHN17101E00X								
	XX ± 0.20	X° ± 2°	APPROVED BY		TITLE						
	XXX ± 0.10	XX° ± 1°	KYSIN		NGFF Socket (M.2 Connector) 0.50mm Pitch, Top-Mount 6.4H, STD. E-Key. Dual-SMT Type. Packaging						
	CUSTOMER DRAWING		CHECKED BY		DWG NO.						
SIZE		DRAWN BY		<table border="1" style="display: inline-table; margin-left: 20px;"> <tr> <td>SHEET</td> <td>SCALE</td> <td>REV</td> </tr> <tr> <td>3 / 3</td> <td>NA</td> <td>B2</td> </tr> </table>		SHEET	SCALE	REV	3 / 3	NA	B2
SHEET	SCALE	REV									
3 / 3	NA	B2									
A4	mm[only]	HARRY		P-PHN17-10E							
		LUCIE									