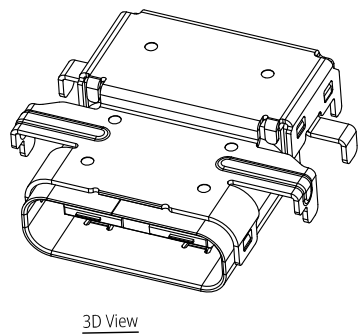
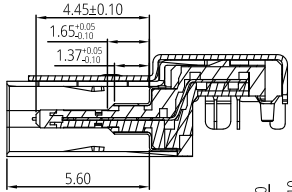
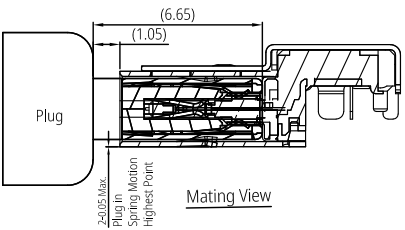
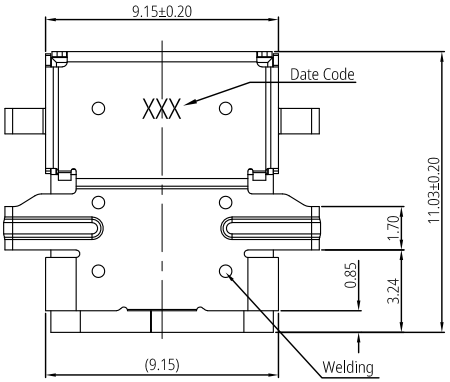


1 2 3 4 5 6 7 8

F
E
D
C
B
A

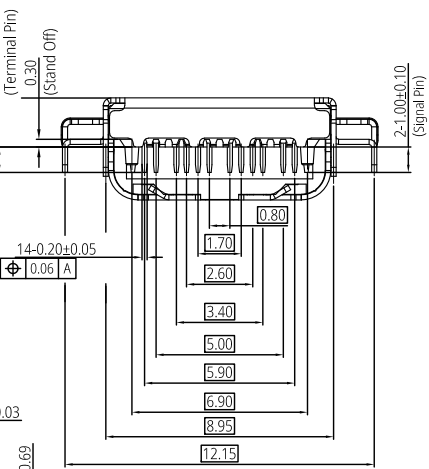
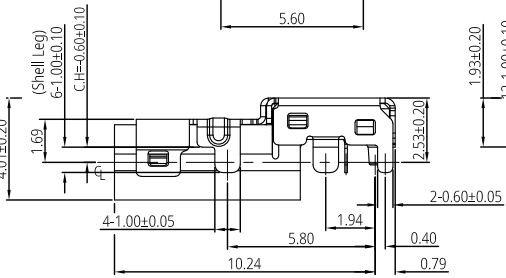
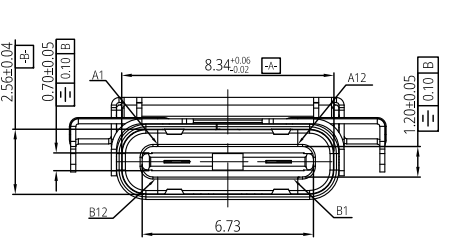
F
E
D
C
B
A



3D View

- Notes:
- Material Specification
 - Shell(outside/inner): Stainless Steel (SUS301) T=0.20mm.
 - Middle Plate: Stainless Steel (SUS301) T=0.10mm.
 - RFI PAD: Stainless Steel (SUS301) T=0.10mm.
 - Housing: LCP+30%G.F. UL94-V0 Black.
 - Terminal: Copper Alloy (C19400) T=0.10mm.
 - Plating Specification
 - Contact: see P/N.
 - Shell: Nickel Plated.
 - Mechanical Performance
 - Insertion force: 5N~20N.
 - Withdrawal force: 8N~20N (initial), after 1000 mating cycles 6N~20N.
 - Durability: 10,000 cycles.
 - Electrical Performance
 - Current Rating: 5A.
 - LLCR: contact 40mΩ max.(initial).
 - Insulation resistance: unmated 100MΩ min.
 - Dielectric withstand voltage: 100V/AC.
 - IR Reflow:

The peak temperature on board shall be maintained for 10 second at 260±5°C.
 - Operating temperature range: -55°C~105°C (without loss function).
 - RoHS and Reach compliant.

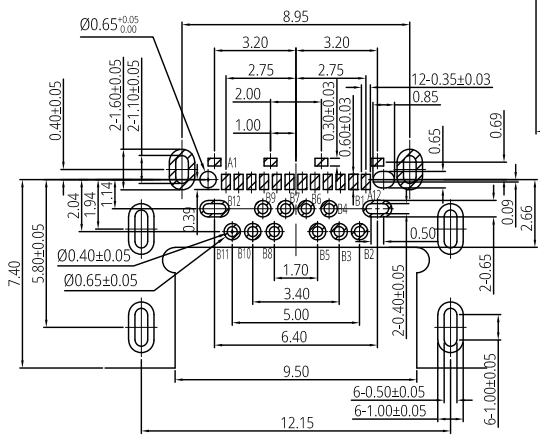
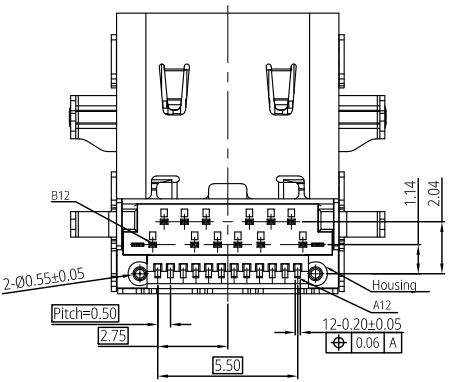


Part Number: PUC0210X0002

Terminal Plating Spec. Code:

- A: Gold Flash on contact area, Matte Tin 80~150μ" on tails, 80~150μ" Nickel plating overall.
- F: Au 30μ" on contact area, Matte Tin 80~150μ" on tails, 80~150μ" Nickel plating overall.
- H: Au 2μ" over 30μ" Pd/Ni on contact area, Matte Tin 80~150μ" on tails, 80~150μ" Nickel plating overall.

Pin Assignments			
Pin	Name	Pin	Name
A1	GND	B12	GND
A2	SSTXp1	B11	SSRXp1
A3	SSTXn1	B10	SSRXn1
A4	VBUS	B9	VBUS
A5	CC1	B8	SBU2
A6	Dp1	B7	Dn2
A7	Dn1	B6	Dp2
A8	SBU1	B5	CC2
A9	VBUS	B4	VBUS
A10	SSRXn2	B3	SSTXn2
A11	SSRXp2	B2	SSTXp2
A12	GND	B1	GND



Recommended P.C.B Layout (Top View)
(Tolerance=±0.05mm)

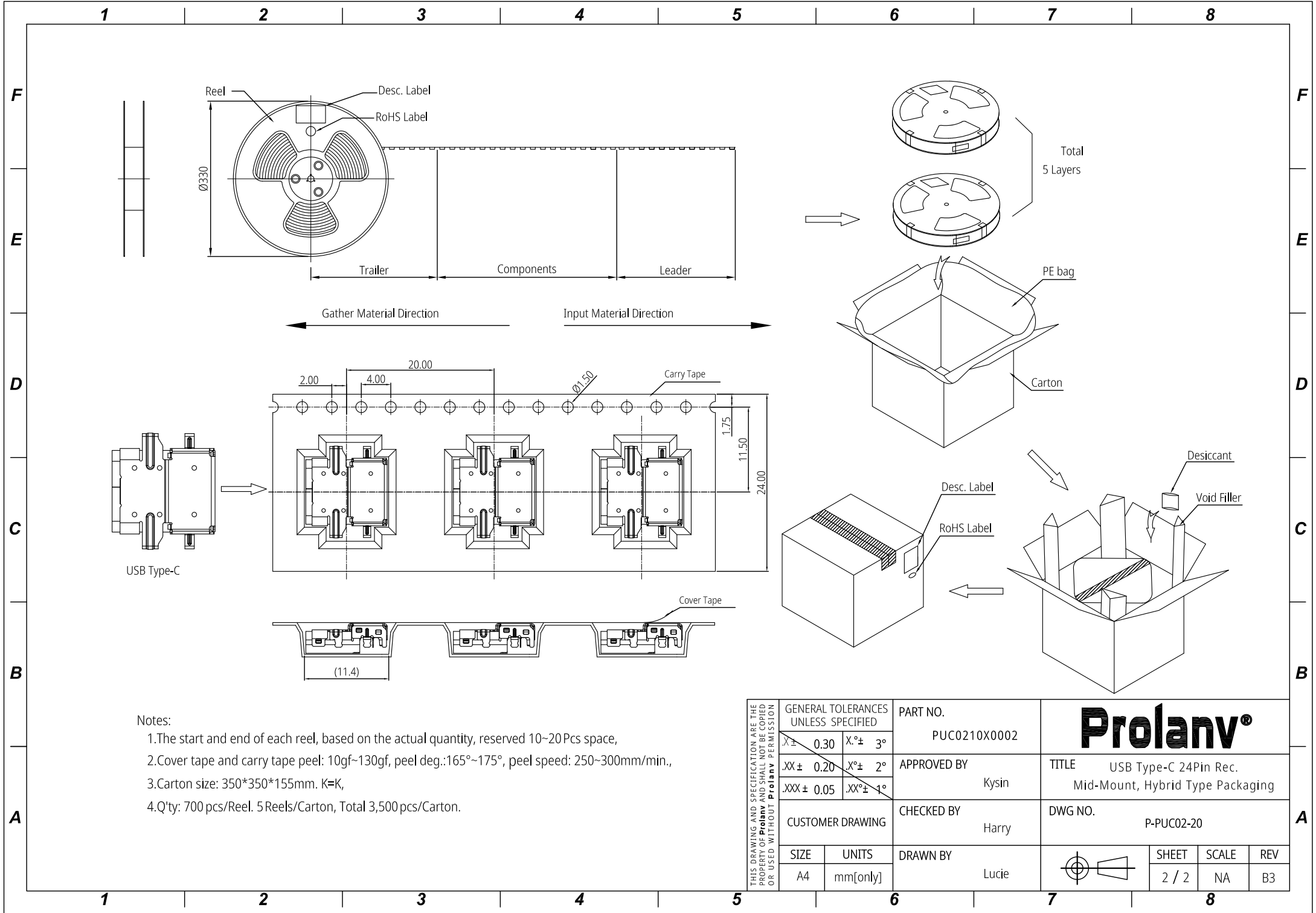
THIS DRAWING AND SPECIFICATION ARE THE PROPERTY OF Prolanv AND SHALL NOT BE COPIED OR USED WITHOUT Prolanv PERMISSION

GENERAL TOLERANCES UNLESS SPECIFIED	
X ± 0.30	X° ± 3°
.XX ± 0.20	.X° ± 2°
.XXX ± 0.05	.XX° ± 1°

PART NO.	
PUC0210X0002	
APPROVED BY	Kysin
CHECKED BY	Harry
DRAWN BY	Lucie

TITLE		
USB Type-C 24Pin Rec. Mid-Mount CH=0.6mm, Hybrid Type		
DWG NO.		
PUC02-20		
	SHEET	SCALE
	1 / 2	1:1
	REV	B3

1 2 3 4 5 6 7 8



- Notes:
- 1.The start and end of each reel, based on the actual quantity, reserved 10~20Pcs space,
 - 2.Cover tape and carry tape peel: 10gf~130gf, peel deg.:165°~175°, peel speed: 250~300mm/min.,
 - 3.Carton size: 350*350*155mm. K=K,
 - 4.Q'ty: 700 pcs/Reel. 5Reels/Carton, Total 3,500 pcs/Carton.

THIS DRAWING AND SPECIFICATION ARE THE PROPERTY OF Prolanv AND SHALL NOT BE COPIED OR USED WITHOUT Prolanv PERMISSION	GENERAL TOLERANCES UNLESS SPECIFIED		PART NO.	Prolanv [®]		
	$X \pm 0.30$	$X^{\circ} \pm 3^{\circ}$	PUC0210X0002			
	$.XX \pm 0.20$	$X^{\circ} \pm 2^{\circ}$	APPROVED BY	TITLE		
	$.XXX \pm 0.05$	$.XX^{\circ} \pm 1^{\circ}$	Kysin	USB Type-C 24Pin Rec. Mid-Mount, Hybrid Type Packaging		
	CUSTOMER DRAWING	CHECKED BY	Harry	DWG NO.		
SIZE	UNITS	DRAWN BY	P-PUC02-20			
A4	mm[only]	Lucie		SHEET	SCALE	REV
				2 / 2	NA	B3