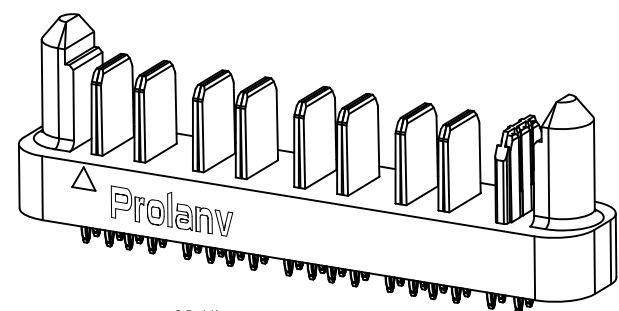
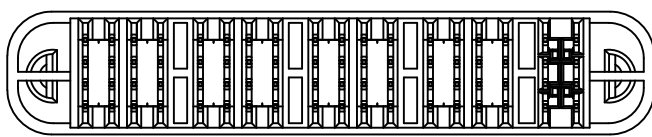
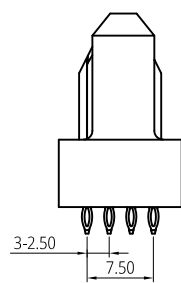
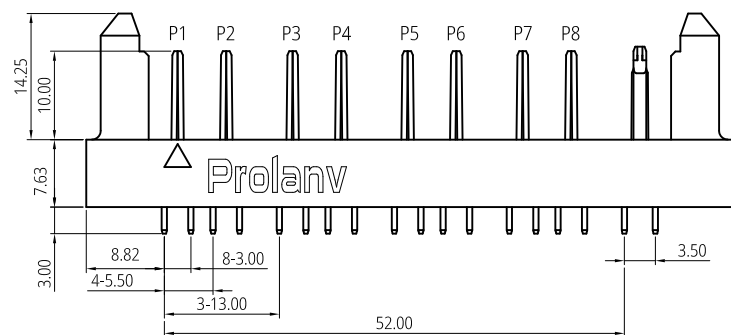
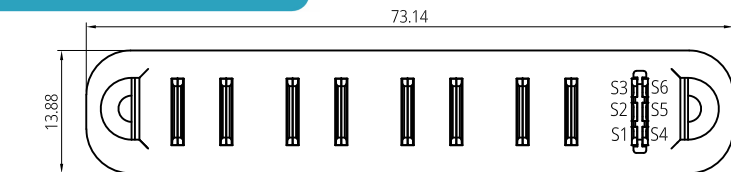
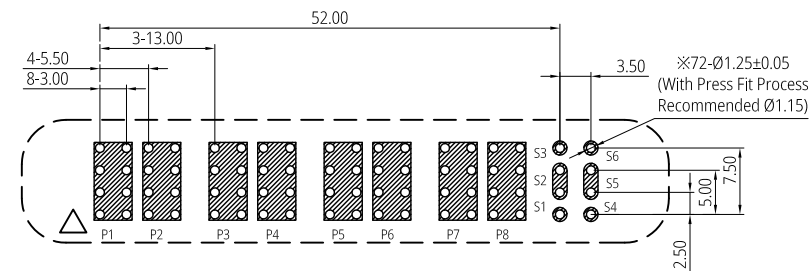


**P**atented product  
**专 利 产 品**



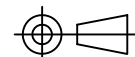
3D View



Recommended P.C.B layout (Top View)  
 Tolerance  $\pm 0.05$

Notes:

- Material Specification
  - Housing: High Temperature Thermoplastic. UL94 V-0, Black.
  - Contact: High Conductivity Copper Alloy.
- Plating Specification:
  - Contact: Gold plating on Contact area, matte Tin 80 $\mu$ " min. on Tails and 50 $\mu$ " min. Nickel overall.
- Electrical performance
  - Voltage Rating: 250v DC/Power Pin, 120v DC/Signal Pin.
  - Current Rating: 60A/per Power Blade, 3A/Signal Pin.
  - LLCR: initial 0.6m $\Omega$  max., finished 1.0m $\Omega$  maximum change (per Power Blade ), initial 10m $\Omega$  max., finished 20m $\Omega$  max.(per Signal Pin)
  - Dielectric Withstanding Voltage:
    - 1500v DC rms/Power Blade; 500v DC rms/Signal Pin,
  - Insulation Resistance:
    - 5000 M $\Omega$  min/power blade; 500 M $\Omega$  min/signal pin;
- Mechanical Performance:
  - Insertion force: 120N (12.2 kgf) (max.)
  - Withdrawal force: 9.8N~98N (1.0~10.0 kgf).
  - Durability life: 10,000 cycles (max.)
- IR Reflow:
  - The peak temperature on board shall be maintained for 10 seconds at 260 $\pm$ 5 $^{\circ}$ c.
- Operating Temperature Range: -40~125 $^{\circ}$ c(without loss function).
- All parts RoHS and Reach compliant.
- ※ See SPS-PDC-06 for Terminal details.

THIS DRAWING AND SPECIFICATION ARE THE PROPERTY OF Prolanv AND SHALL NOT BE COPIED OR USED WITHOUT Prolanv PERMISSION	GENERAL TOLERANCES UNLESS SPECIFIED		PART NO.		<b>Prolanv</b> <sup>®</sup>		
	X $\pm$ 0.30	X. $^{\circ}$ $\pm$ 3 $^{\circ}$	PDC1920F0001				
	XX $\pm$ 0.20	.X. $^{\circ}$ $\pm$ 2 $^{\circ}$	APPROVED BY	TITLE EN60A series   Power Male. 8PW+6S, Straight Type			
	XXX $\pm$ 0.05	.XX $^{\circ}$ $\pm$ 1 $^{\circ}$	Kysin				
	CUSTOMER DRAWING		CHECKED BY	DWG NO. PDC19-20			
			Harry				
SIZE	UNITS	DRAWN BY			SHEET	SCALE	REV
A4	mm[only]	Lucie			1 / 2	1:1	B0

1 2 3 4 5 6 7 8

F

F

E

E

D

D

C

C

B

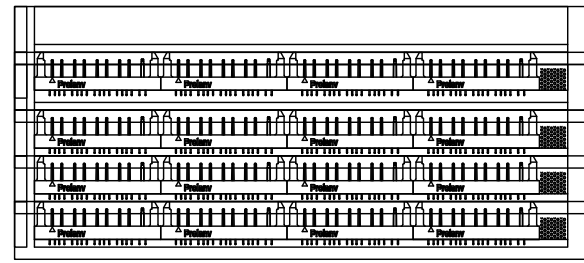
B

A

A



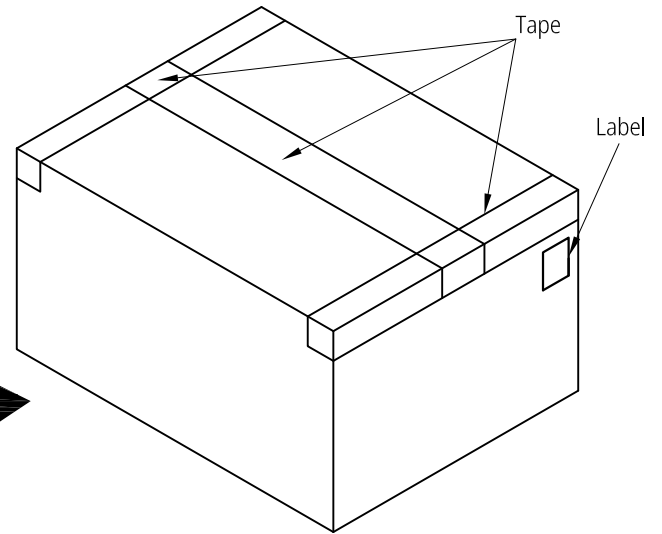
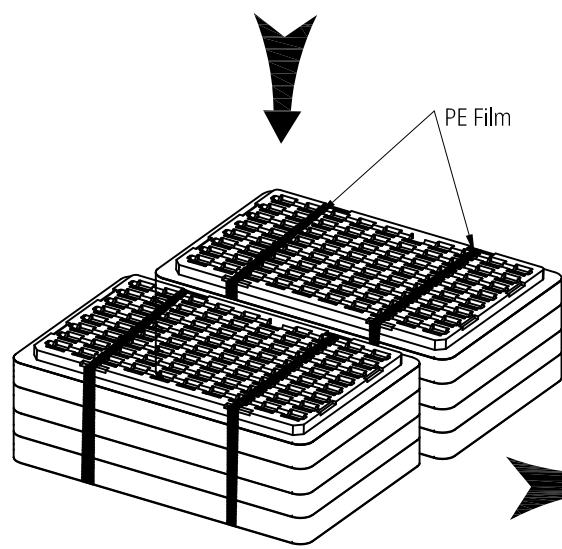
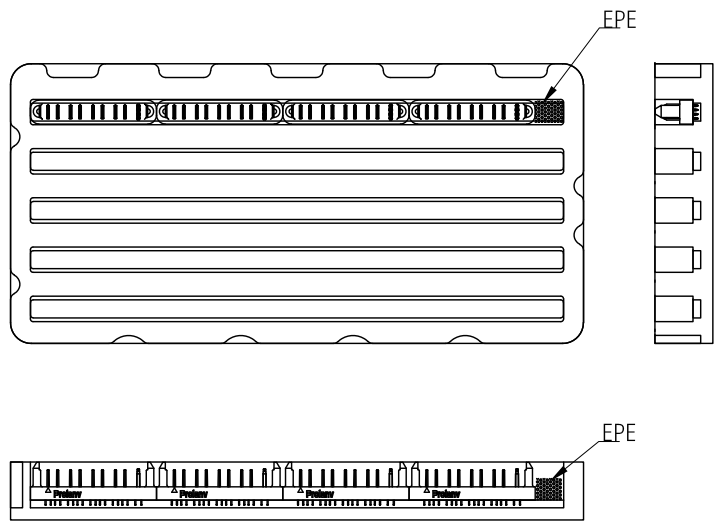
20Pcs/Tray



Total: 2x4 Layers

Notes:

- 1. Q'ty: 20Pcs/Tray, 2x4Layers=160Pcs/Carton.
- 2. Tray Pallet size: 332\*162mm.
- 3. Carton size: 350\*350\*155mm.



THIS DRAWING AND SPECIFICATION ARE THE PROPERTY OF Prolanv AND SHALL NOT BE COPIED OR USED WITHOUT Prolanv PERMISSION	GENERAL TOLERANCES UNLESS SPECIFIED		PART NO.		<h1>Prolanv®</h1>		
	X ± 0.30	X° ± 3°	PDC1920F0001				
	XX ± 0.20	XX° ± 2°	APPROVED BY		TITLE		
	XXX ± 0.05	XXX° ± 1°	Kysin		EN60A series   Power Male. 8PW+6S, Straight Type, Packaging		
	CUSTOMER DRAWING		CHECKED BY		DWG NO.		
		Harry		P-PDC19-20			
SIZE	UNITS	DRAWN BY			SHEET	SCALE	REV
A4	mm[only]	Lucie			2 / 2	N/A	A1

1 2 3 4 5 6 7 8