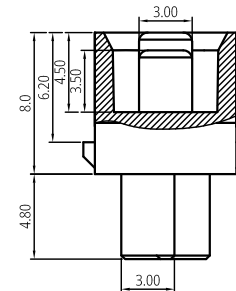
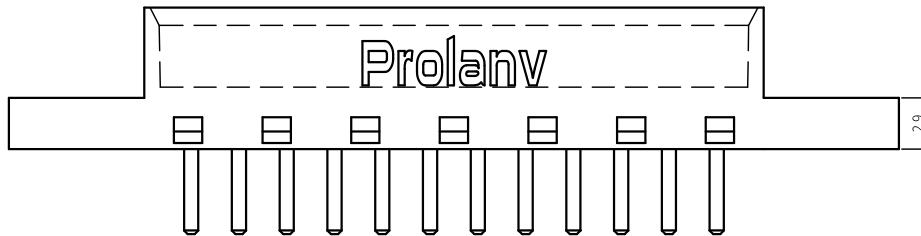
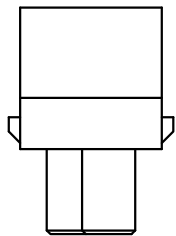


Recommended P.C.B layout (Top View)

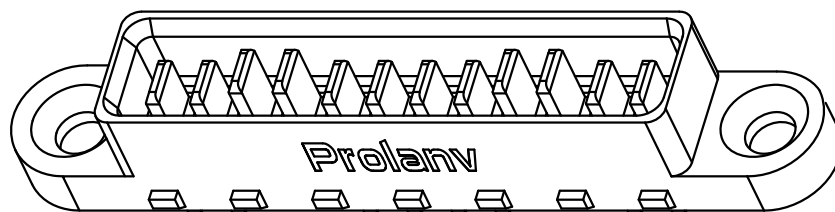
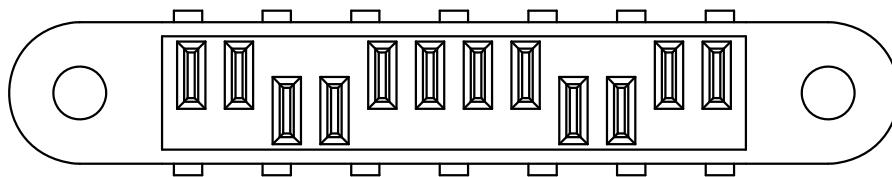
Tolerance ±0.05



Notes:

1. Material Specification
 - 1-1. Housing: High Temperature Thermoplastic, UL94 V-0,
 - 1-2. Contact: High Conductivity Copper Alloy,
 - 1-3. Screw-Hole: Copper Alloy.
2. Plating Specification:
 - 2-1. Contact: Gold Plating on contact area, Gold Flash on Tails, and 50µ" min. Nickel overall.
3. Electrical performance
 - 3-1. Voltage Rating: 50V DC.
 - 3-2. Current Rating: 20A max./Per Pin.
 - 3-3. LLCR: 1.0mΩ max.(initial).
 - 3-4. Dielectric Withstanding Voltage: 500V AC (RMS) for 60S.
 - 3-5. Insulation Resistance: 1000 MΩ min./500V DC.
4. Mechanical Performance:
 - 4-1. Insertion force: 88N (9.0 kgf) (max.)
 - 4-2. Withdrawal force: 9.8N~88N (1.0~9.0 kgf).
 - 4-3. Durability life: 1,000 cycles.
5. IR Reflow:

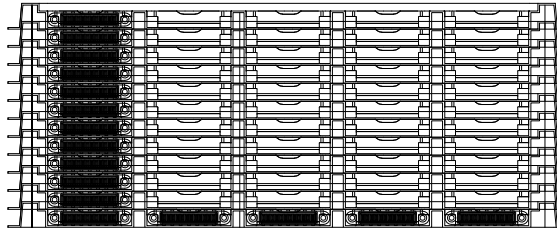
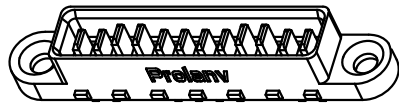
The peak temperature on board shall be maintained for 10 seconds at 260±5°C.
6. Operating Temperature Range: -40~105°C(without loss function).
7. All parts RoHS and Reach compliant.



3D View

THIS DRAWING AND SPECIFICATION ARE THE PROPERTY OF Prolanv AND SHALL NOT BE COPIED OR USED WITHOUT Prolanv PERMISSION

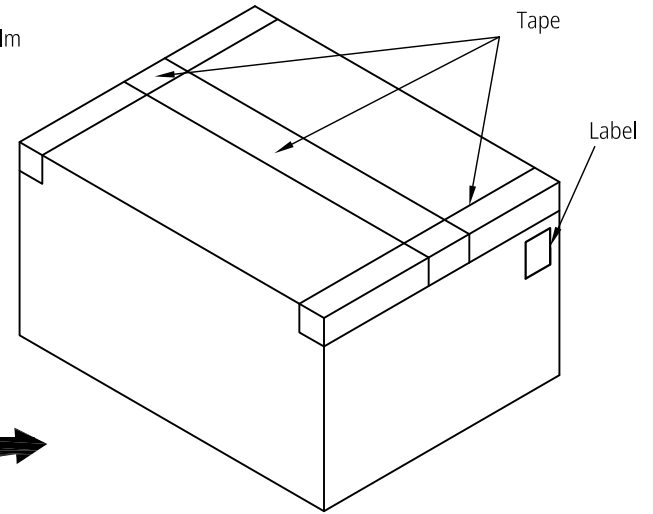
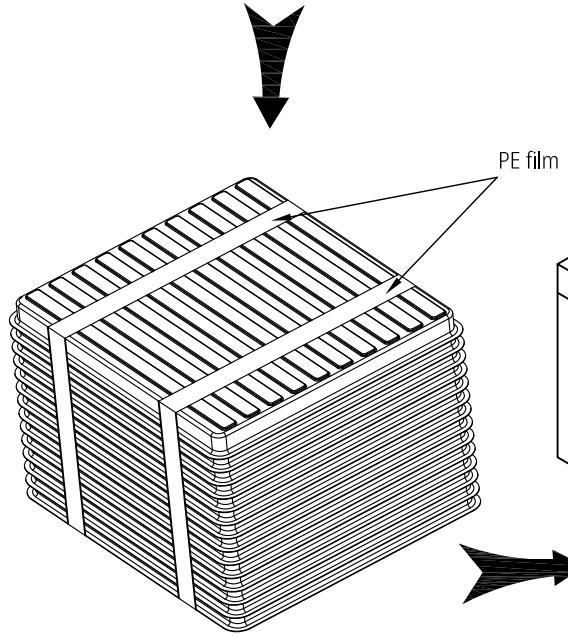
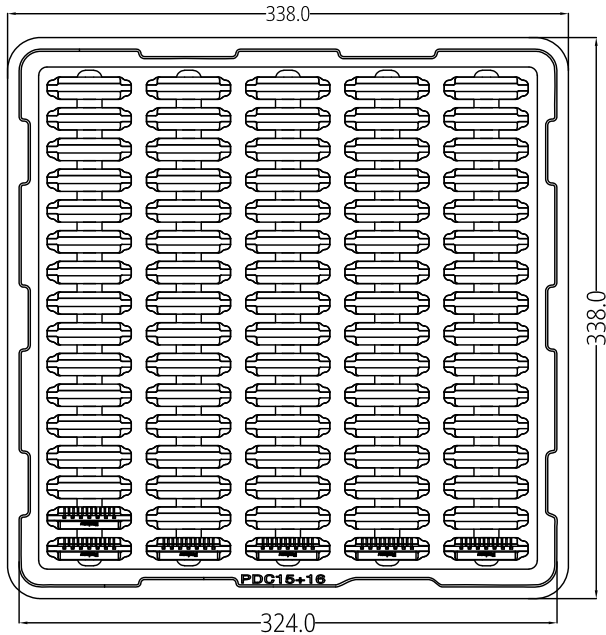
GENERAL TOLERANCES UNLESS SPECIFIED		PART NO. PDC1530B0001	Prolanv [®]			
X ± 0.30	X.° ± 3°					
XX ± 0.20	.X.° ± 2°	APPROVED BY Mike	TITLE 20A/Per Pair Max. Power Male. 2.7Pitch, H8.0mm, DIP Type			
XXX ± 0.05	.XX.° ± 1°	CHECKED BY Henry	DWG NO. PDC15-30			
CUSTOMER DRAWING		DRAWN BY Lucie		SHEET	SCALE	REV
SIZE A4	UNITS mm[only]			1 / 2	1:1	A2



Total:12 Layers

Notes:

1. Q'ty: 80 Pcs/Tray, 12 Layers=960 Pcs/Carton.
2. Tray Pallet size: 338*338mm, T=15.50mm.
3. Carton size: 350*350*155mm.



THIS DRAWING AND SPECIFICATION ARE THE PROPERTY OF Prolanv AND SHALL NOT BE COPIED OR USED WITHOUT Prolanv PERMISSION

GENERAL TOLERANCES UNLESS SPECIFIED		PART NO.	Prolanv [®]		
X ± 0.30	X° ± 3°	PDC1530B0001			
XX ± 0.20	XX° ± 2°	APPROVED BY	TITLE 20A/Per Pair Max. Power Male. 2.7Pitch, H8.0mm, DIP Type Packaging		
XXX ± 0.05	XXX° ± 1°	Mike	DWG NO. P-PDC15-30		
CUSTOMER DRAWING		CHECKED BY	REV		
		Henry	2 / 2		
SIZE	UNITS	DRAWN BY	SCALE		
A4	mm[only]	Lucie	N/A		

