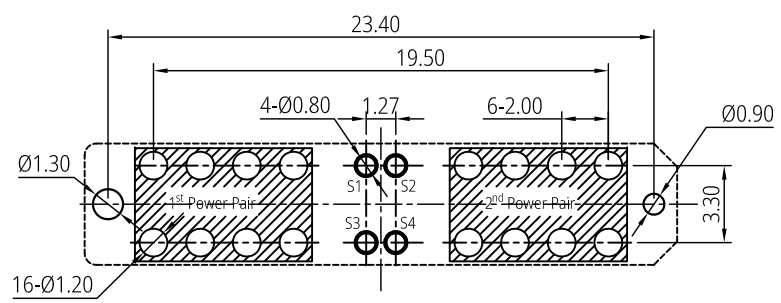
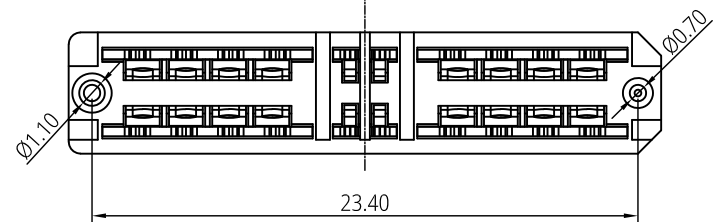
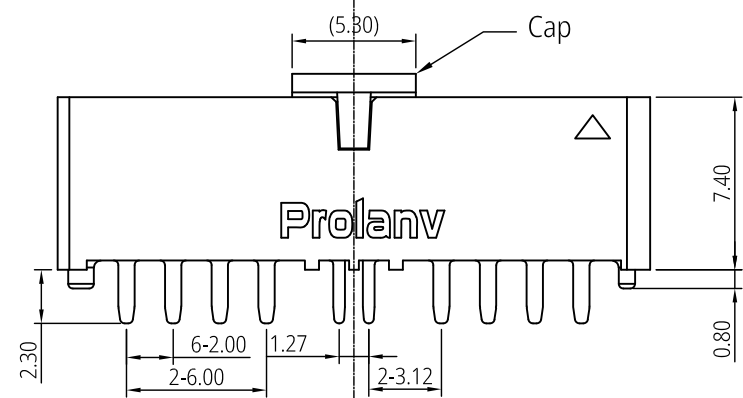
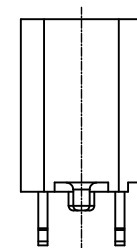


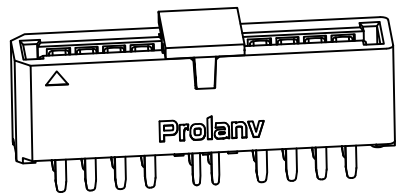
3D View

- Note:
- Material:
    - Housing: High Temperature Thermoplastic. UL 94 V-0 black.
    - Power Pin & Signal Pin: High Conductivity Copper Alloy.
  - Plating Specification:
    - Gold Plating on the functional area and on tails of contact, Nickel under plated.
  - Electrical Performance:
    - Current rating: 50A/Per Power Pair, 1A/Per Signal Pin.
    - Voltage rating: 60V DC/Power Pin, 30V DC/Signal Pin.
    - LLCR (Power Pin): 0.5mΩ max.(initial), 1.0mΩ max.(final).
    - LLCR (Signal Pin): 20mΩ max.(initial), 30mΩ max.(final).
    - Dielectric Withstanding Voltage: 500V AC (RMS) for 60s.
    - Insulation Resistance: 500MΩ min. @ 500V DC.
  - Mechanical Performance:
    - Insertion force: 49N (5.0kgf) max.
    - Withdrawal force: 4.9N (0.5kgf) min.
    - Durability life: 2,000 cycles.
  - IR Reflow:
    - The peak temperature on board shall be maintained for 10 seconds at 260±5°C.
  - Operating temperature range: -40°C~125°C.
  - All part RoHS and Reach compliant.

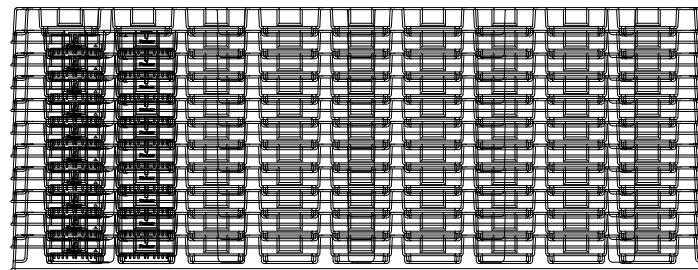
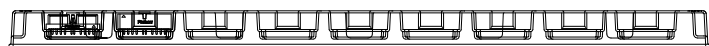
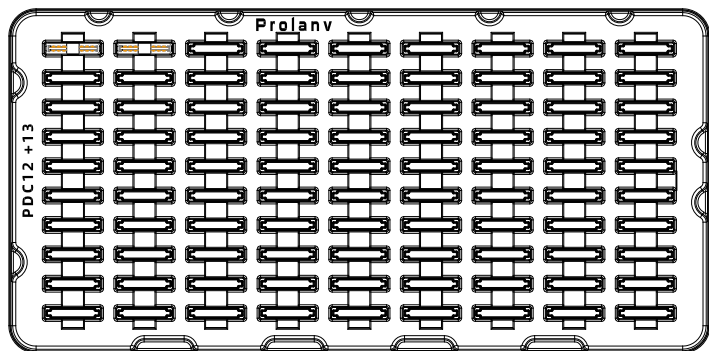


Recommended P.C.B Layout (Top View)  
Tolerance: ±0.05mm

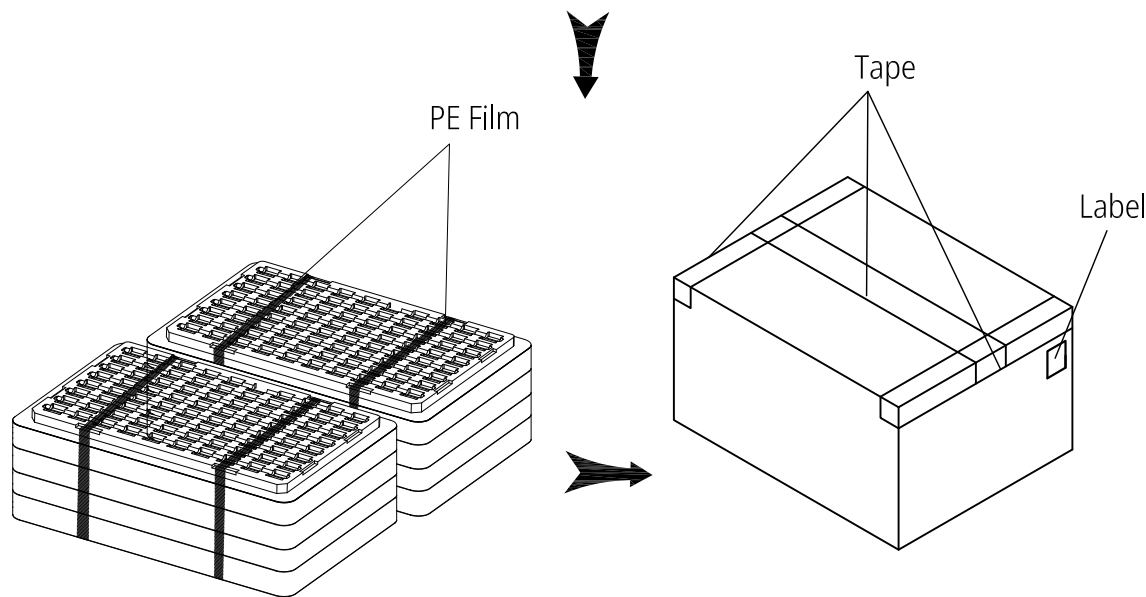
THIS DRAWING AND SPECIFICATION ARE THE PROPERTY OF Prolanv AND SHALL NOT BE COPIED OR USED WITHOUT Prolanv PERMISSION	GENERAL TOLERANCES UNLESS SPECIFIED		PART NO. PDC1210B0001	<b>Prolanv</b> <sup>®</sup>		
	X ± 0.30	X.° ± 3°				
	.XX ± 0.20	.X.° ± 2°	CHECKED BY Henry	DWG NO. PDC12-10		
	.XXX ± 0.10	.XX.° ± 1°	DRAWN BY Poplar	SHEET SCALE REV 1 / 2 1:1 A1		
	SIZE A4	UNITS mm[only]				



90pcs/Tray



Total 2\*10 Layers



Notes:

1. Q'ty: 90Pcs/Tray, 2x10Layers=1,800 Pcs/Carton.
2. Tray Pallet size: 332\*162\*17mm.
3. Carton size: 350\*350\*155mm.

THIS DRAWING AND SPECIFICATION ARE THE PROPERTY OF Prolanv AND SHALL NOT BE COPIED OR USED WITHOUT Prolanv PERMISSION	GENERAL TOLERANCES UNLESS SPECIFIED		PART NO.	<b>Prolanv®</b>		
	X ± 0.30	X° ± 3°	PDC1210B0001			
	.XX ± 0.20	.X° ± 2°	APPROVED BY	TITLE Mini Power Female. 2PW+4S. Straight DIP Type Packaging		
	.XXX ± 0.10	.XX° ± 1°	Dio.Chen	DWG NO. P-PDC12-10		
	CUSTOMER DRAWING		CHECKED BY	DRAWN BY		
SIZE	UNITS	Henry	Poplar	SHEET SCALE REV		
A4	mm[only]				2 / 2 NA A1	